

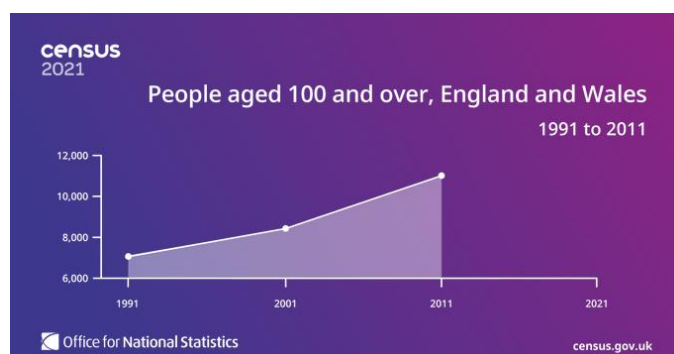
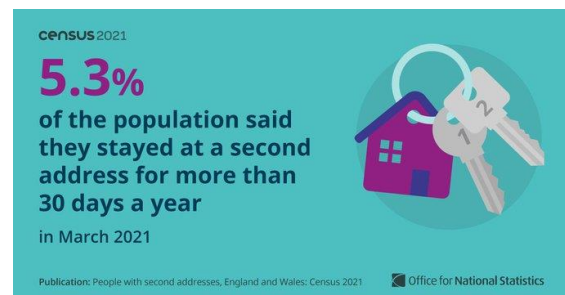
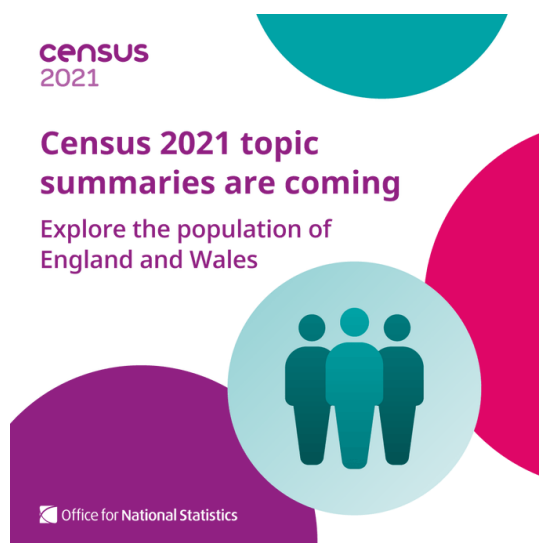


# Ideas for presenting State of the Sector findings

## 1. Infographics

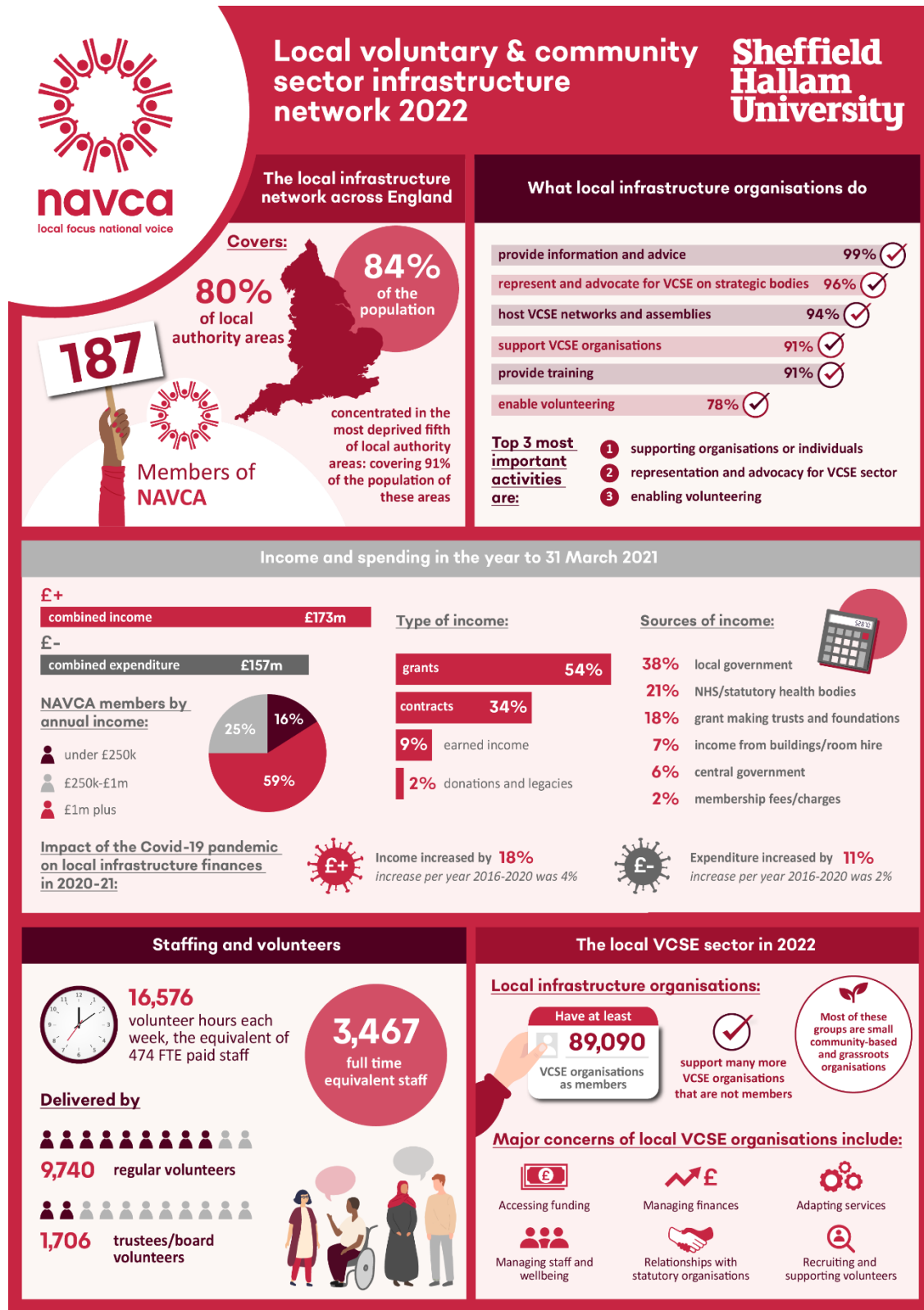
**Tools:** Canva, Piktochart & more

**Example:** ONS @Census2021 Twitter images



Example: NAVCA's recent Infrastructure research project

<https://navca.org.uk/research-project>



## Delivering the Four Functions of Infrastructure

### Leadership and Advocacy

#### Seat at local strategic tables:

integrated health and care arrangements	89%	✓
health and wellbeing board	71%	✓
local resilience forum	69%	✓

#### High participation and influence by VCSE in local strategies:

VCSE/civil society strategy	78%	✓
community strategies	70%	✓
health and wellbeing strategies	70%	✓
integrated care strategies	57%	✓

### Partnerships and Collaboration

#### Local infrastructure organisations have strong relationships with:

other local support organisations	93%	✓
larger service delivery voluntary organisations	87%	✓
racially minoritised community groups	74%	✓

#### Strong relationships with external stakeholders:

local council officers	91%	✓
NHS commissioners and providers	86%	✓
local grant making trusts and foundations	84%	✓

### Capacity Building

Supported local VCSE organisations to secure funding of:

£139m

- 91% provide one to one practical guidance and support for VCSE organisations
- 91% provide training for VCSE organisations
- 98% expect continuing or increasing demand for practical support and guidance for VCSE organisations

### Volunteering

- 88% promote/advertise volunteering opportunities
- 81% give advice/promote good practice
- 70% offer a matching function
- 67% host or run a volunteer centre
- 58% co-ordinate volunteers

#### In the 12 months to March 2022:

30,000

organisations have used volunteering services

91%

of which are local VCSEs



## The Future

#### Local infrastructure organisations are building for sustainability by:

building stronger relationships with health authorities	96%	✓
building alliances and collaborations with other VCSE organisations	94%	✓
building stronger relationships with local authorities	92%	✓
demonstrating impact	90%	✓
diversifying funding streams	86%	✓

#### Support needed in the next 2-3 years to:

- evaluate and demonstrate impact
- develop business and funding streams
- enhance leadership and strategic thinking

Local voluntary and community sector infrastructure network 2022

For the full report please see [www.navca.org.uk](http://www.navca.org.uk)  
NAVCA - Charity No: 1001635



navca  
local focus national voice

Sheffield  
Hallam  
University

## 2. Interactive charts & graphs embedded on a web page

**Tools:** Datawrapper

**Example:** NCVO Almanac

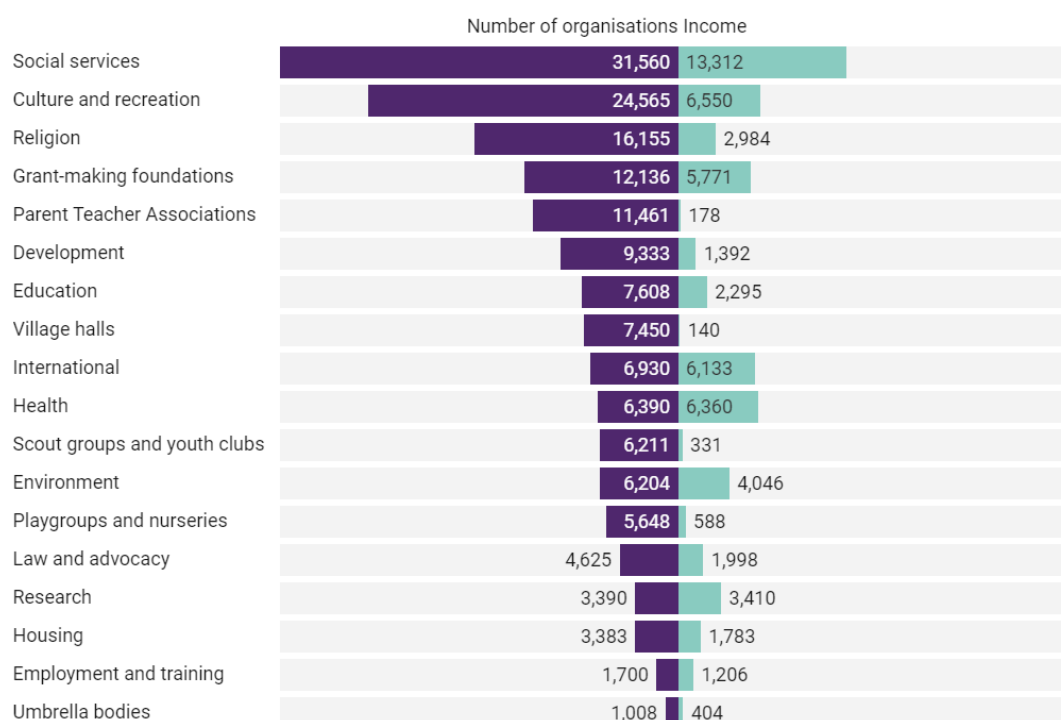
<https://www.ncvo.org.uk/news-and-insights/news-index/uk-civil-society-almanac-2022/executive-summary/#/>

Number and percentage of voluntary sector organisations by size, 2019/20

Income band	Name	Number of organisations	% of all organisations
Less than £10,000	Micro	74,242	44.79
£10,000 to £100,000	Small	58,546	35.32
£100,000 to £1m	Medium	26,253	15.84
£1m to £10m	Large	5,872	3.54
£10m to £100m	Major	782	0.47
More than £100m	Super-major	64	0.04
<b>All organisations</b>	<b>Total</b>	<b>165,758</b>	<b>100.00</b>

Source: NCVO, Charity Commission • [Get the data](#) • Created with [Datawrapper](#)

Number of organisations and income by subsector, 2019/20 (n, £m)



Source: NCVO, Charity Commission • [Get the data](#) • Created with [Datawrapper](#)

### 3. Curated paginated stories with interactive charts

**Tool:** Flourish

**Example:** Citizens Advice Cost of Living Dashboard

<https://public.flourish.studio/story/1634399/>



## Citizens Advice cost of living data dashboard

January 2023

Britain is facing its biggest cost of living crisis in decades. At Citizens Advice, we've seen more people coming to us for help with crisis support, energy problems and not having enough money to make ends meet than ever before. In this dashboard we share insights from across our service on how the crisis is affecting the people we help.

We'll be updating this dashboard every month tracking how the cost of living crisis is changing. If there are insights you'd like to hear from us, please get in contact at [coldatadashboard@citizensadvice.org.uk](mailto:coldatadashboard@citizensadvice.org.uk).

Our next briefing is on February 23rd, you can sign up [here](#). You can share your reactions on social media using #CitizensAdviceData.

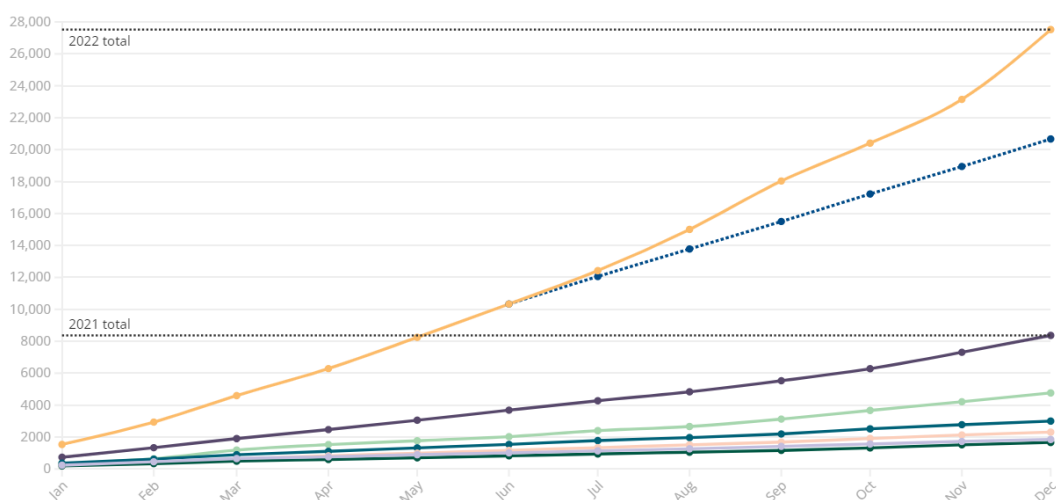


We're continuing to overshoot projections for the number of people coming to us who can't afford to top up their prepayment energy meter, and therefore can't do the basics like turning on their fridge or heating their hob.

By the end of last December, we've already seen more people unable to afford to top up their prepayment meter than for the entirety of the previous 10 years combined.

### Cumulative number of people we've seen who've been unable to top up their prepayment meters each year

■ 2022 (Projection made in June) ■ 2022 ■ 2021 ■ 2020 ■ 2019 ■ 2018 ■ 2017 ■ 2016



You can access this visualisation directly [here](#) • Data for England Wales. Data from Local Citizens Advice Offices and the Consumer Service. The 2022 projection is based on average monthly cases in the first 6 months of 2022 (1st January to 31st June). Due to changes in the way we count this metric, we have slightly revised the monthly figure for the most recent release. You can access this visualisation directly [here](#).  
More advisor capacity mobilised in December helped respond to more demand but this does not explain the full extent of December's increase.



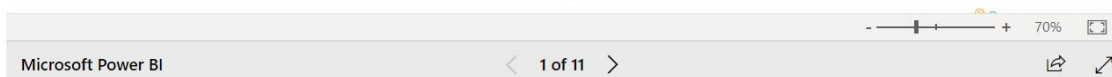
**Tool:** PowerBI

**Example:** Superhighways Datawise London dashboard

<https://datawise.london/about/impact>

Datawise London has helped charities and community organisations unlock the value of their data through a unique data literacy partnership. Explore our interactive dashboard to find out how.

October 2019 - June 2021



## 4. Interactive presentations

**Tool:** Prezi

**Example:** KVA's Intro to the charity sector presentation

<https://prezi.com/view/cSkc2NJAIWFYVRnyxDq7/>

### KINGSTON'S CHARITABLE SECTOR



Presented by Patricia Turner for KINGSTON VOLUNTARY ACTION

