

MAP OF COMMUNITY VIEWS: COVID-19

Concerns gathered from 21 roundtables with groups disproportionately impacted by the pandemic

Wednesday 24 February 2021, 9am – 10am

Olivia Bellas and Melissa Bennett, Community Engagement Officers, Community Engagement Team

Mike Brondbjerg, Data Visualisation Developer, Intelligence Unit

THE COMMUNITY ENGAGEMENT TEAM

- London's communities will be involved in shaping the GLA's strategies, policies and programmes.
- Civic voices will be strengthened and all Londoners will have more opportunities to take action on the issues that matter to them.
- Londoners and Civil Society will be true partners in London government.

Bridge between Londoners and City Hall



WHY?

Why did we embark upon this work? Why did we reach out to these groups?

More BAME people are dying from coronavirus. We have to know why

Sadiq Khan



Why are more people from BAME backgrounds dying from coronavirus?

What's behind the disproportionate impact of COVID-19 on BAME groups?

Calls mount for public inquiry into UK BAME Covid-19 death rate

BAME workers disproportionately hit by UK Covid-19 downturn, data shows

Being of Bangladeshi origin doubles Covid-19 death risk, finds PHE review

EXCLUSIVE

Coronavirus: Up to 25 Filipinos among healthcare workers to die from COVID-19 in UK

The number of deaths make up 19% of the more than 100 health and social care workers believed to have died on the frontline.

Covid: South Asian hospital patients 'at greater risk of dying'

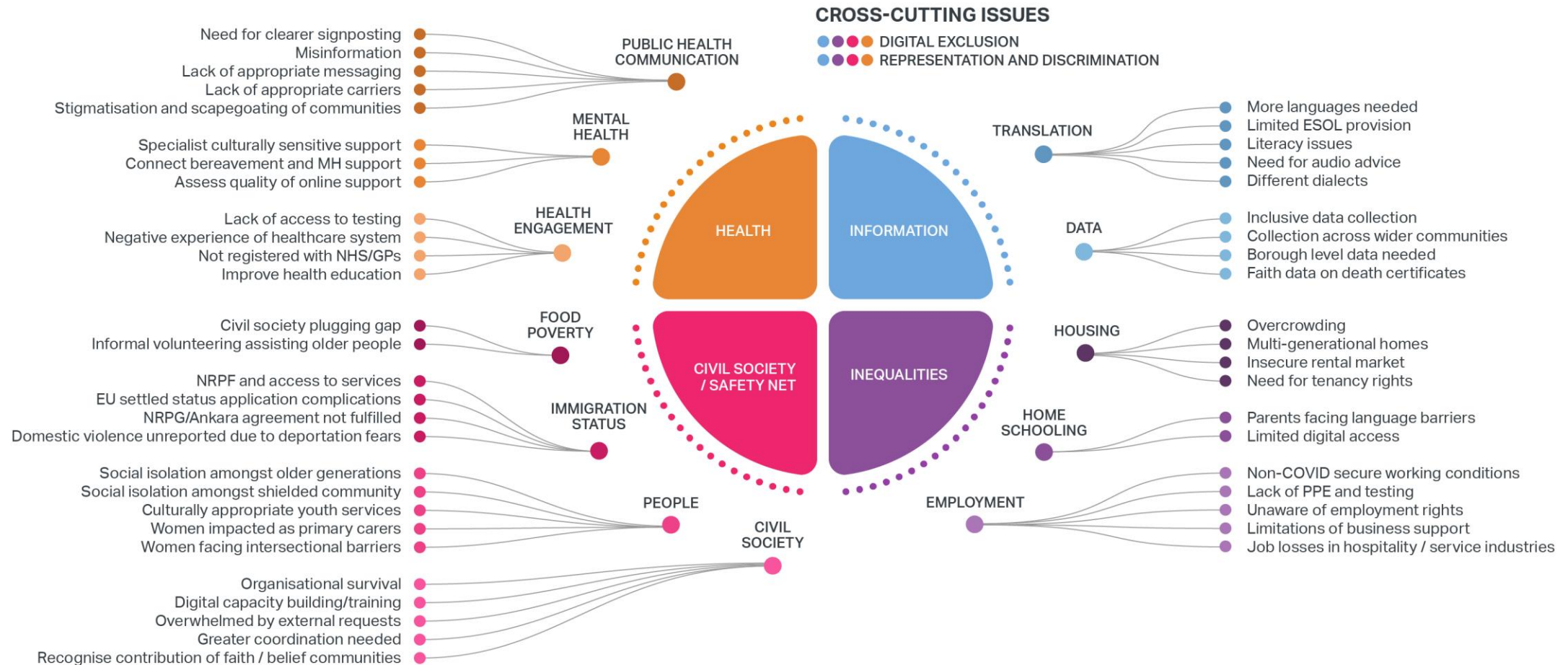
THE ROUNDTABLES

Roundtables focused on set questions – snapshot here:

- What are the assets (e.g. resources, skills, organisations) in your community that are enhancing health and wellbeing during this period?
- What **particular impacts do you feel are unique to your community?**
- **What changes**, that would directly benefit your community, would you like to see as part of London's COVID-19 recovery?
- As we move into a transition phase, what are some of the **key concerns held by members of your communities for the near future?**

MAP OF COMMUNITY VIEWS: COVID-19

Concerns gathered from 21 roundtables with groups disproportionately impacted by the pandemic



MAP OF COMMUNITY VIEWS: COVID-19

Detail View : Information



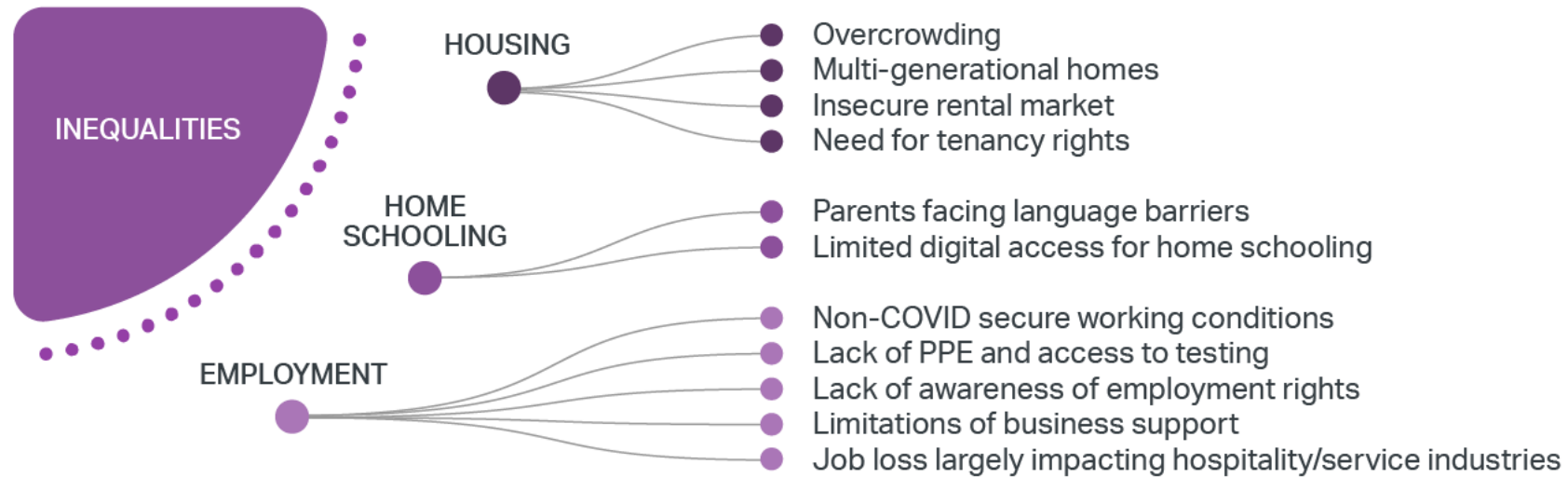
CROSS-CUTTING ISSUES

● ● ● ● DIGITAL EXCLUSION

● ● ● ● REPRESENTATION AND DISCRIMINATION

MAP OF COMMUNITY VIEWS: COVID-19

Detail View : Inequalities



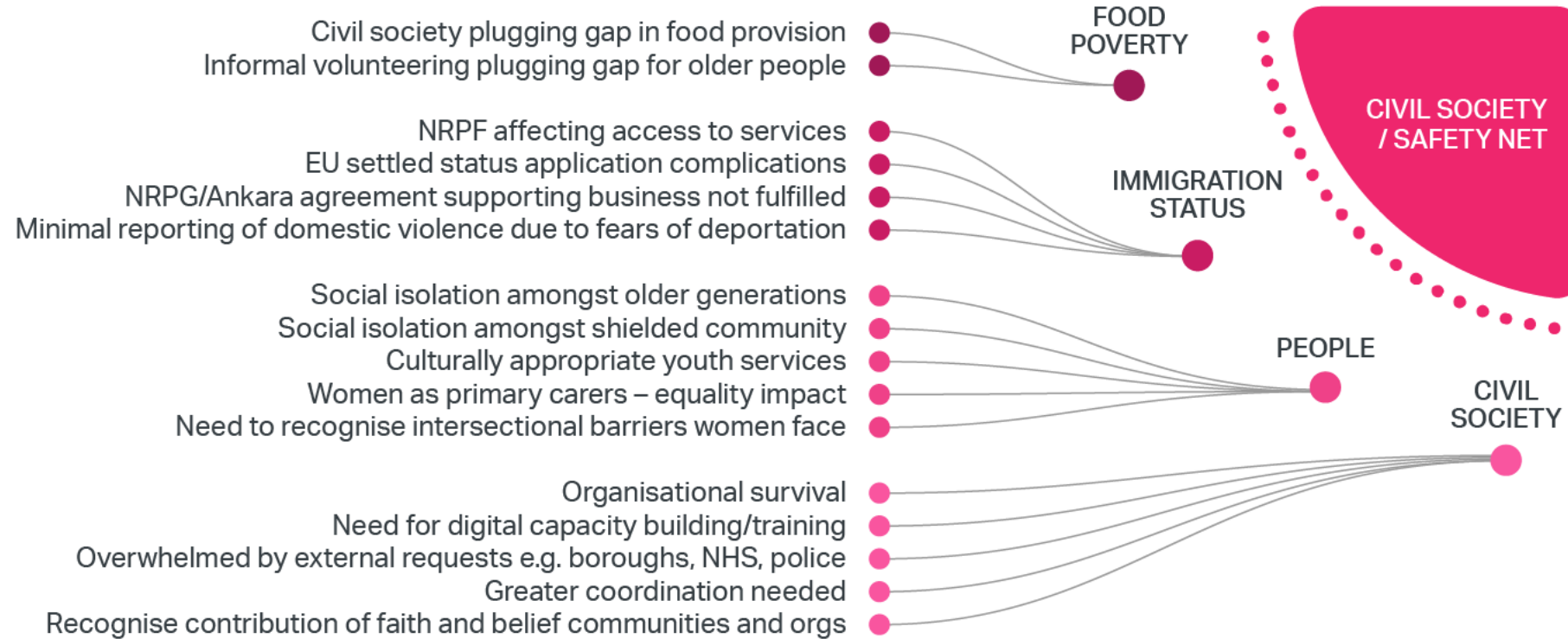
CROSS-CUTTING ISSUES

● ● ● ● DIGITAL EXCLUSION

● ● ● ● REPRESENTATION AND DISCRIMINATION

MAP OF COMMUNITY VIEWS: COVID-19

Detail View : Civil Society / Safety Net Issues



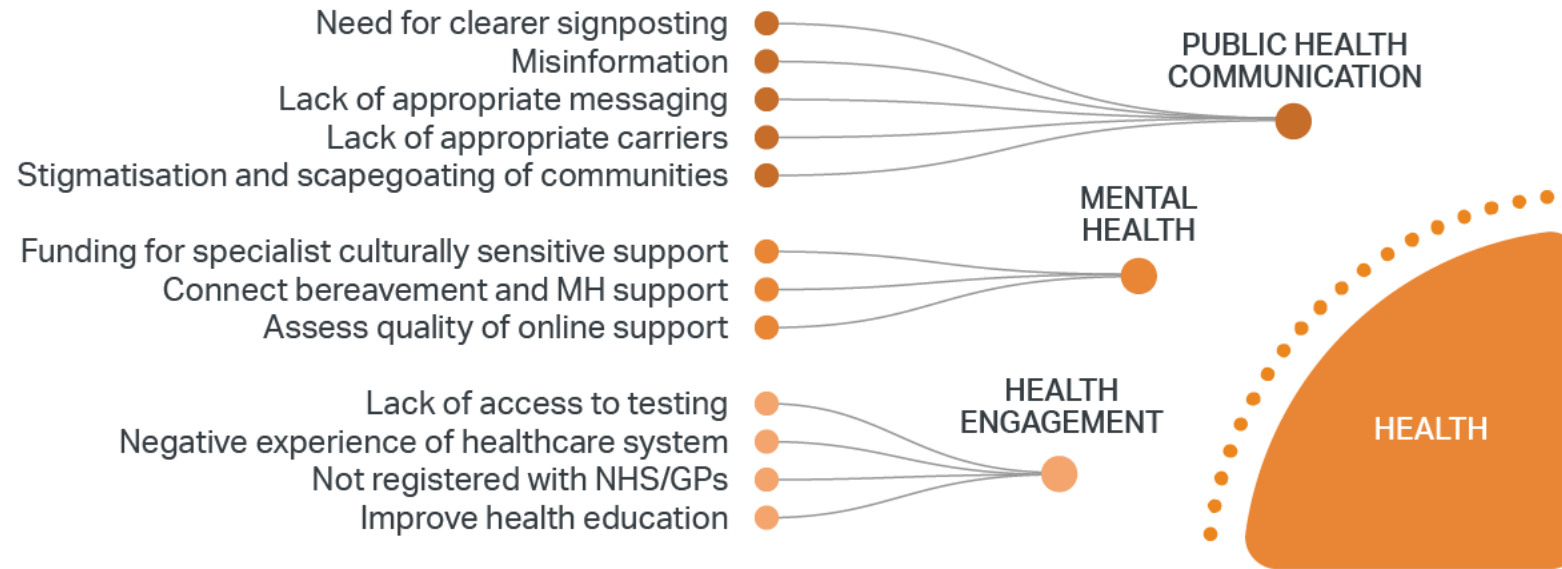
CROSS-CUTTING ISSUES

● ● ● ● DIGITAL EXCLUSION

● ● ● ● REPRESENTATION AND DISCRIMINATION

MAP OF COMMUNITY VIEWS: COVID-19

Detail View : Health



CROSS-CUTTING ISSUES

- ● ● ● DIGITAL EXCLUSION
- ● ● ● REPRESENTATION AND DISCRIMINATION

GAPS & OTHER INSIGHTS

Whose experiences are missing? How can we ensure that their views are represented?

Deaf and Disabled
Londoners

Women

Extremely Clinically
Vulnerable Londoners

Other data sources: Community Conversations on Recovery Missions

[London Community Response Survey](#) - Dataset presents results of a weekly questionnaire sent to a cohort of frontline civil society organisations from April 2020.

[Rapid Evidence Review](#) – Documenting and understanding the impact of COVID-19; both health and the broader impacts on existing social and economic inequalities for those with protected characteristics

ACTIONS SO FAR

How has this data influenced our work and the work of others?

Translating Covid Guidance

Housing concerns connected to policy teams

Findings from the roundtables fed into public health analysis undertaken by the Health Team

Specific follow ups: East and South East Asian & Somali Communities

Initiating monthly Public Health Briefings

Informing programme design: Civic Futures and Community Led Recovery Programme

DATA VISUALISATION & INFORMATION DESIGN

Hello

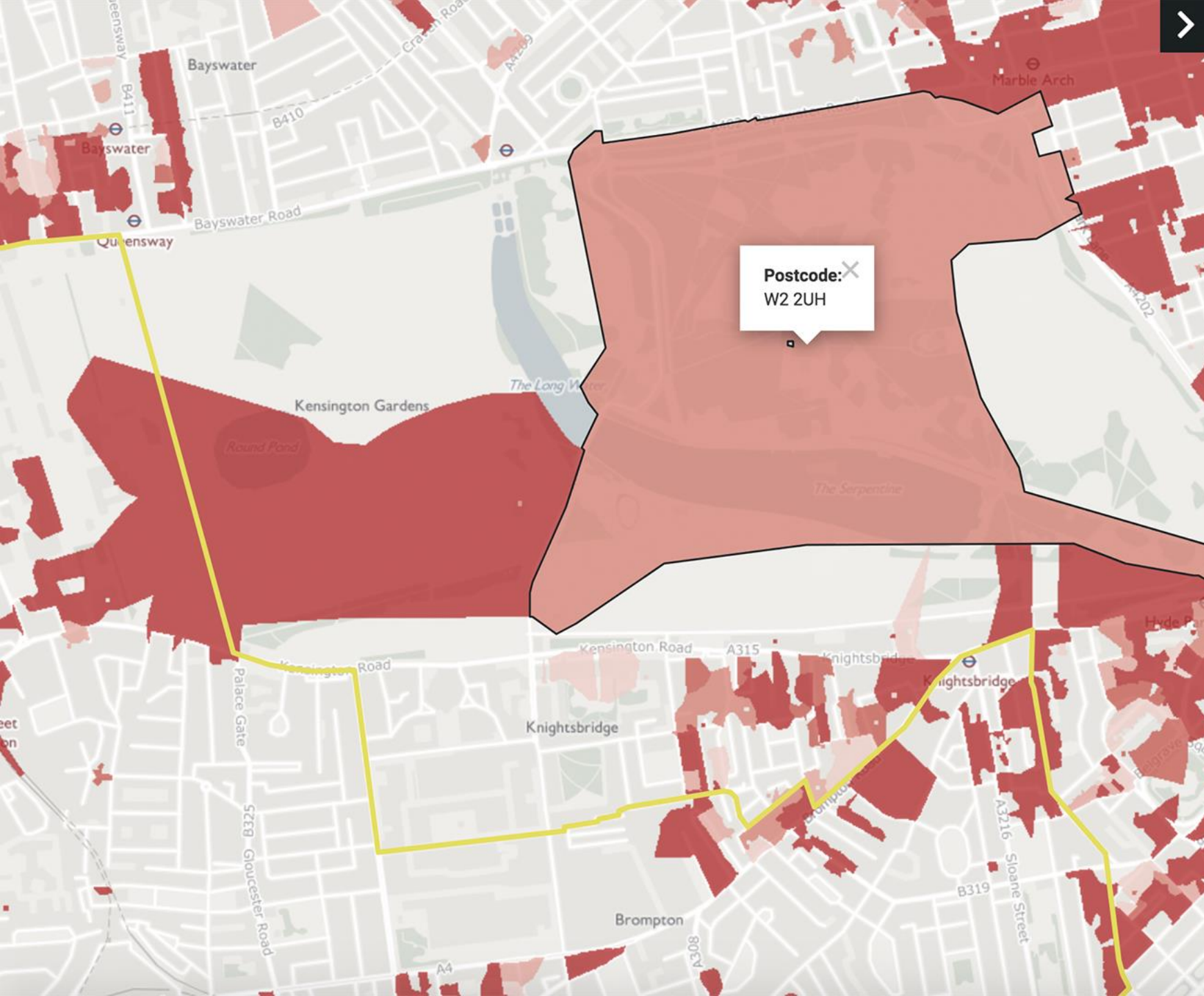
Mike Brondbjerg

Data Visualisation & Information Design

GLA City Intelligence Unit

Email: mike.brondbjerg@london.gov.uk





Web: data.london.gov.uk



LONDON CONNECTIVITY i

Use this map to view estimated coverage of broadband services across London by Postcode, Ward or Borough. It doesn't show exact locations of connections, but is the most comprehensive information publicly available.

Search near a location:

- 
Data By Area
- 
Availability
- 
Unavailability
- 
Other

- Connectivity Data by Borough ▾
- Connectivity Data by Ward ▾
- Connectivity Data by Postcode ▾

	Availability			Unavailability			
	Super Fast	Ultra Fast	Full Fibre	2Mb/s	5Mb/s	10Mb/s	30Mb/s
London Average:	95.59%	74.3%	10.68%	0.01%	0.06%	0.31%	4%
Borough: WESTMINSTER	81.5%	29.5%	16.7%	0%	0%	0.1%	18.3%
Ward: Knightsbridge and Belgravia	65.92%	9.25%	6.92%	0%	0%	1.59%	32.49%
Postcode: W2 2UH							

LONDON POPULATION PROJECTIONS EXPLORER

Explore the 2018 based population projections produced by GLA demography. Select which component you are interested in, a projection, and then a location, time and demographic profile:

Projections & Components

Various projections are available. (Note: Not all options are available within every projection):

Projection:

Select which component you would like to explore (Population, Births, Deaths, etc):

Component:

Where, When & Who

Select location, time and demographic profile:

Borough:

Ward:

Year:

Ethnicity:

Sex:

Age From: Age To:

Data Downloads

This Selection by Year:

This Selection (all Wards) by Year:

All data for this Area / Ethnicity:

Chart Data:

Download as:

Graphic Downloads

Select Chart:

Download as:

Total Population: 44,074

Projection: Housing Led
Component: Population
Borough: Barking and Dagenham
Ward: Borough Total

Year: 2029
Ethnicity: All persons
Age: 28 - 50
Sex: Male Only



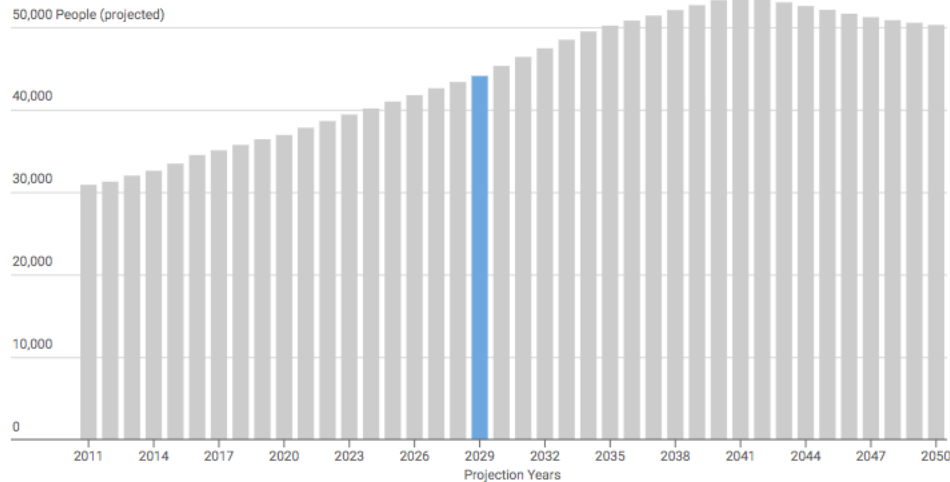
About These Population Projections

The GLA's population projections are updated annually at both local authority and ward level. The 2018-based projections are the most recent set taking as their starting point an adjusted 2018 mid-year population estimate. We produce multiple variants to cover a range of applications. The variants can differ in the methodologies and assumptions used. **For most uses we recommend the housing-led variant projection.**

For more information and complete London datasets, please visit <https://data.london.gov.uk/demography/>

Population Projection: Barking and Dagenham

Housing Led, Borough Total, All persons, Male Only, 28 - 50



Source: GLA Demography 2018 Based Population Projections
Graphic by GLA City Intelligence

Population by Borough

Housing Led, 2029, Barking and Dagenham (selected), Borough Total, All persons, Male Only, 28 - 50

Population by Sex: Barking and Dagenham

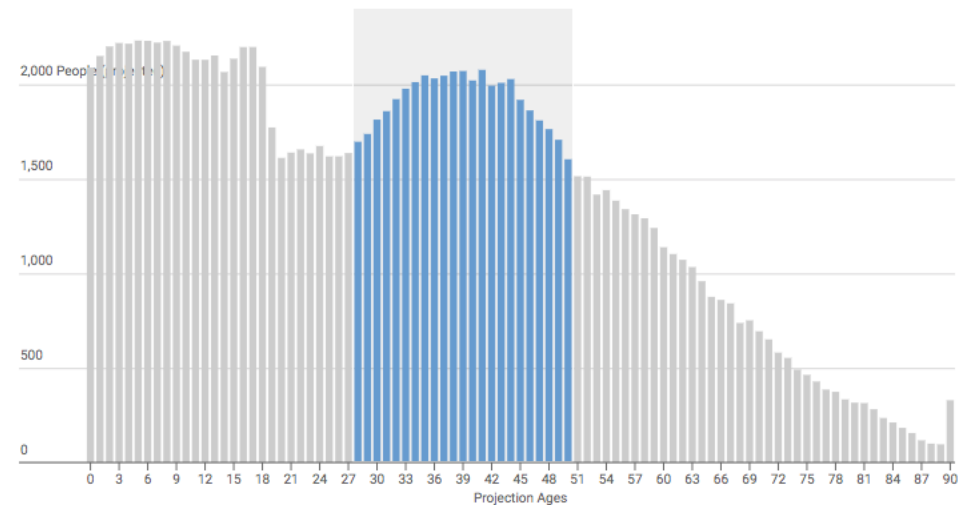
Housing Led, 2029, Borough Total, All persons, 28 - 50



Source: GLA Demography 2018 Based Population Projections
Graphic by GLA City Intelligence

Population by Age: Barking and Dagenham

Housing Led, 2029, Borough Total, All persons, Male Only

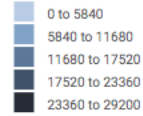


Source: GLA Demography 2018 Based Population Projections
Graphic by GLA City Intelligence

Covid-19 Cases (Pillar 1 & 2) by London Borough (2020-08-20 to 2021-01-17)

Displaying cumulative count (all historic) at: 2021-01-17

Cumulative cases in Borough



Time Series: Daily Cases In Range

0 to 1043 Cases

Source: <https://coronavirus.data.gov.uk/> - Note: Data for most recent 5 days may be incomplete.

Graphic by GLA City Intelligence | London Squared Format by After The Flood



COVID-19 LDN Boroughs



Visualisation shows case numbers (aggregated by Borough) as reported to Public Health England (PHE).
 Note: Data from around 5 days ago can be considered complete. Data for recent days are constantly being revised as more information becomes available.

[Click Here for Data Source](#)

Select Start Date:

20 Aug 2020

Select End Date (Max 150 days from start):

17 Jan 2021

Current Day in Range: 2021-01-17

Cumulative Counts

From Range Start

From Earliest Historic

Timeseries Scale Max (Daily / Cumulative Cases)

In Date Range Only

All Historic

Timeseries Data (Daily Cases In Range)

Cumulative Cases

Daily Cases

Show / Hide Timeseries Data

Show

Hide

Export Graphic

PNG

SVG



OUTCOMES

Personal well-being

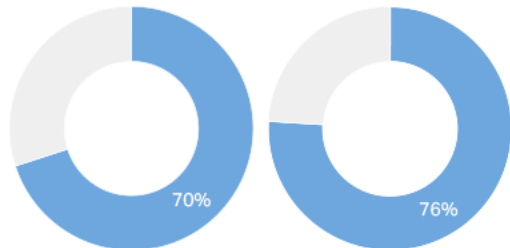
Sixty per cent of Londoners report high or very high personal well-being.



● Very High: 17%
 ○ High: 43%
 ○ Medium: 23%
 ○ Low: 14%
 ● Don't Know / No Answer: 3%

Well-being is closely associated with economic advantage

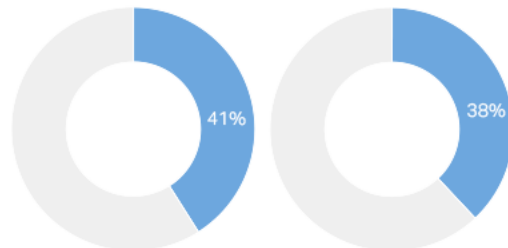
Groups with higher rates of personal well-being



Owner-occupiers
70%

Highest incomes
76%

Groups with lower rates of personal well-being

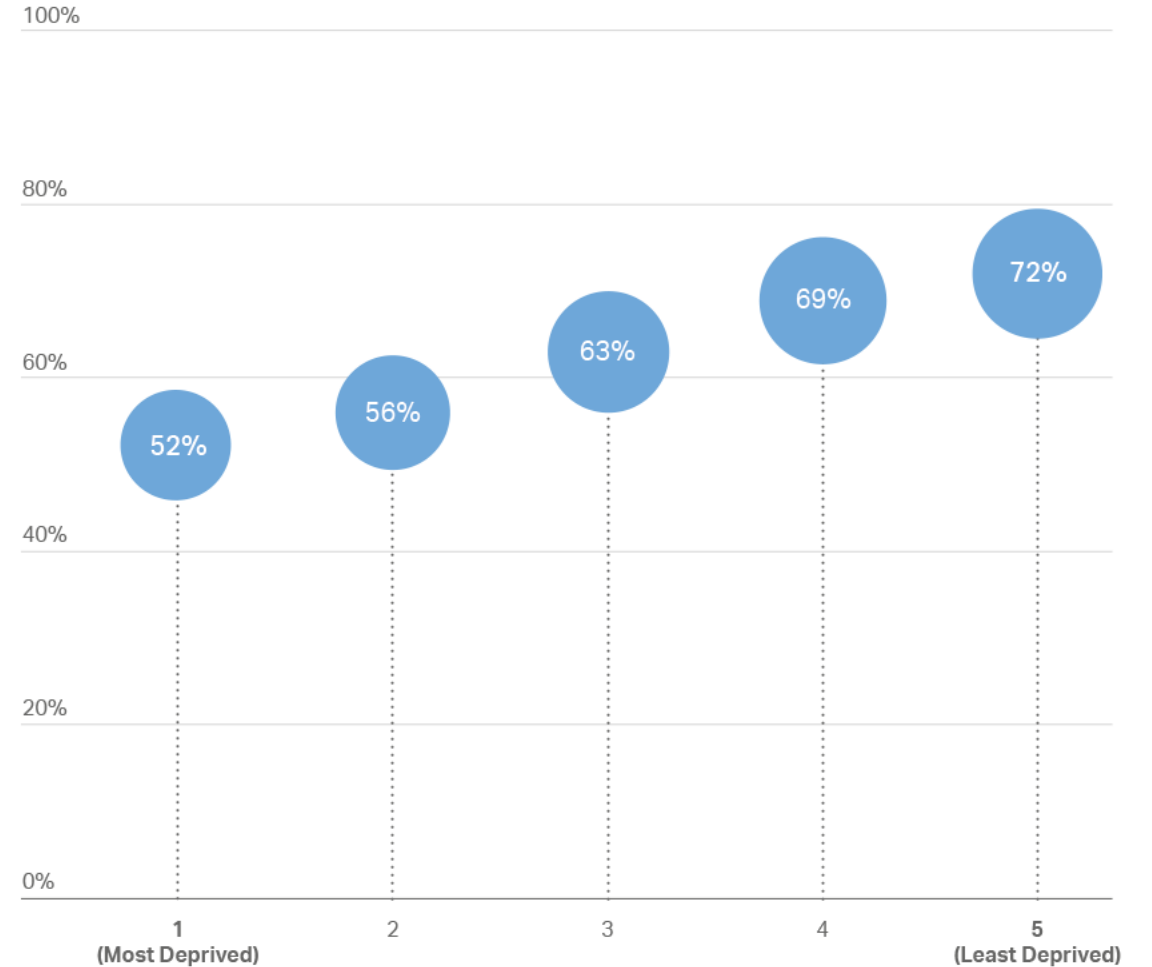


Social Renters
41%

Disabled Londoners
38%

Fewer Londoners living in the most deprived neighbourhoods report high personal well-being

% of Londoners reporting high or very high levels of personal well-being

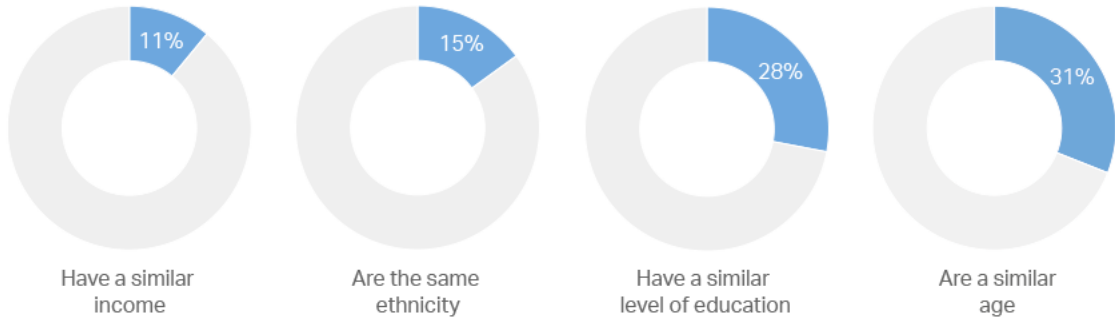




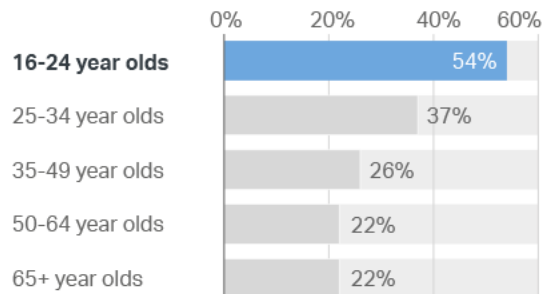
RELATIONSHIPS

Diversity among friendship groups

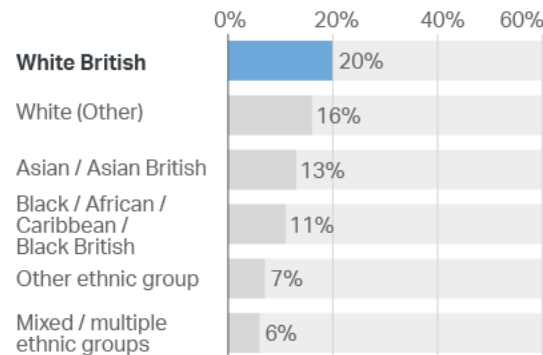
How many Londoners say that all their friends...



Younger Londoners are more likely to say that all their friends are a similar age



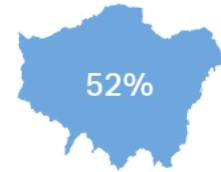
White British Londoners are more likely to say that all their friends are from the same ethnic background



Diversity among wider social networks

Londoners with more diversity in their network of close friends are more likely to report diversity within their wider social network e.g.

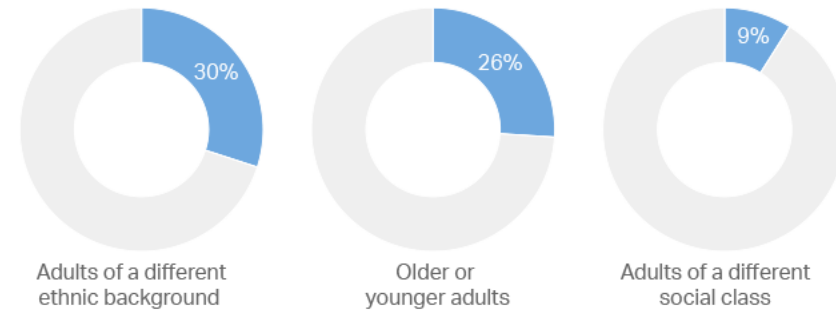
Only 11 per cent of Londoners who say that all of their close friends are of the same ethnic background, report positive frequent contact with others of a different ethnicity in their wider interactions with people.



But this is 52 per cent among those Londoners who say that less than half of their close friends are from the same ethnic background.

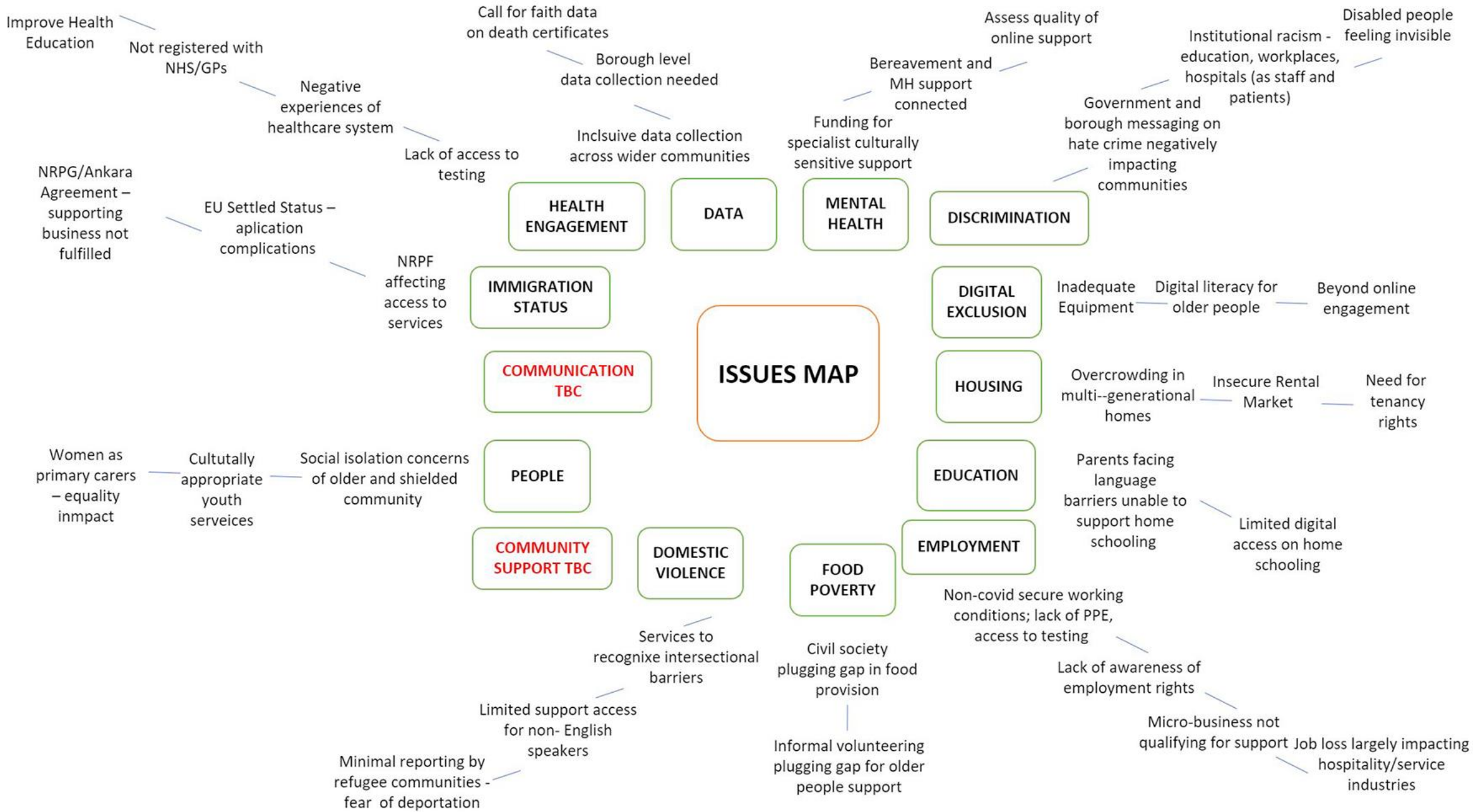
Diversity among acquaintances

Outside close friends, how many Londoners say that they have positive, frequent social contact with colleagues/neighbours and others who are...



ISSUES MAP – DESIGN PROCESS

How did we arrive at this design for the Issues Map?



ISSUES MAP – DESIGN PROCESS

What problems were we trying to solve?

1. Need to communicate all the issues fairly
2. Need to show broad relationship between all issues
3. Too much to fit on a single screen
 - a. Comprehension of detail
 - b. Accessibility
4. We'll need to find a way of "zooming in" on a subset of the issues
5. Data was loosely categorised, but not usefully
6. Text was long and un-edited

ISSUES MAP – DESIGN PROCESS

Find the Project, Delivery & Design constraints

Project & Delivery Constraints

1. Platform / Medium?
 - a. Static Graphic
 - b. Presentation
 - c. Interactive
 - d. Report
2. Deadline vs Development Time
3. Reusability vs Development Cost
4. Audience

Design Constraints

1. Number of top level categories?
2. Maximum text length of any individual node?
3. Maximum node count?
4. Reasonable font size?

ISSUES MAP – DESIGN PROCESS

“Data Visualisation is the Art of Tidying Up”

- Moritz Stefaner (after Marie Kondo)

Information

- **Translation**
 - more languages needed
 - limited ESOL provision
 - literacy issues
 - go beyond written translations with audio advice
 - different dialects
- **Data**
 - Inclusive data collection
 - Collection across wider communities
 - Borough level data collection needed
 - Call for faith data on death certificates

Inequalities

- **Housing**
 - Overcrowding in multi-generational homes
 - Insecure rental market
 - Need for tenancy rights
- **Education**
 - Parents facing language barriers
 - Limited digital access for home schooling
- **Employment**
 - Non-COVID secure working conditions
 - Lack of PPE and access to testing
 - Lack of awareness of employment rights
 - Limitations of business support
 - Job loss largely impacting hospitality/service industries

Civil Society/Safety Net

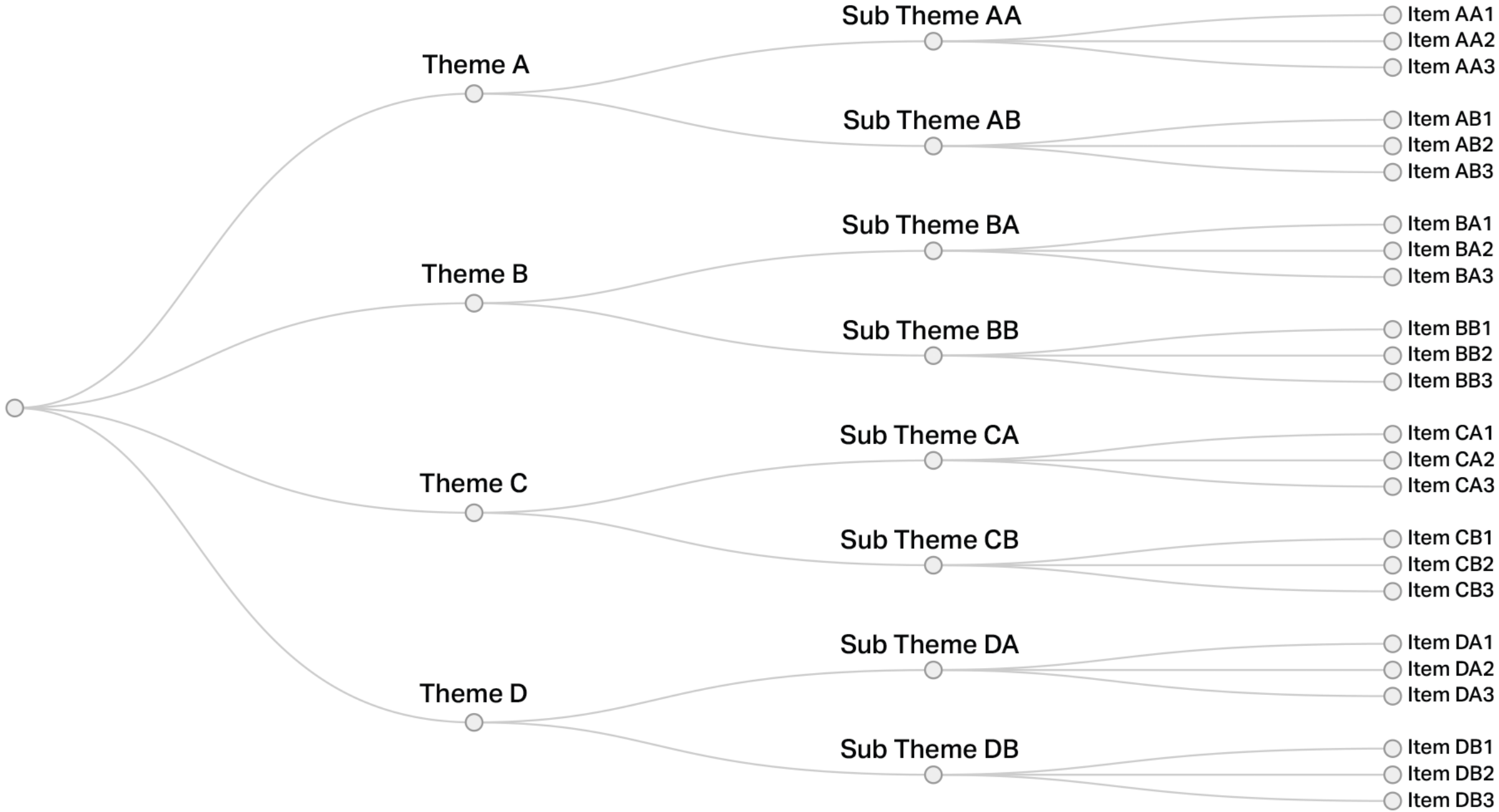
- **Food poverty**
 - Civil society plugging gap in food provision
 - Informal volunteering plugging gap for older people
- **Immigration status**
 - NRPf affecting access to services
 - EU settled status application complications
 - NRPf/Ankara agreement supporting business not fulfilled
 - Minimal reporting of domestic violence due to fears of deportation
- **People**
 - Social isolation amongst older generations
 - Social isolation amongst shielded community
 - Culturally appropriate youth services
 - Women as primary carers – equality impact
 - ~~Services~~ need to recognise intersectional barriers women face
- **Civil society**
 - Organisational survival
 - Need for digital capacity building/training
 - Overwhelmed by external requests e.g. boroughs, NHS, police
 - Greater coordination needed
 - recognise contribution of faith and belief communities and orgs

Health

- **Health engagement**
 - Lack of access to testing
 - Negative experience of healthcare system
 - Not registered with NHS/GPs
 - Improve health education
- **Mental health**
 - Funding for specialist culturally sensitive support
 - Connect bereavement and MH support
 - Assess quality of online support
- **Public health communication**
 - Need for clearer signposting
 - Misinformation
 - Lack of appropriate messaging
 - Lack of appropriate carriers
 - Stigmatisation and scapegoating of communities ~~through comms.~~

Cross-cutting issues: |

- digital exclusion
- representation and discrimination



Circular Dendrogram

Hierarchy

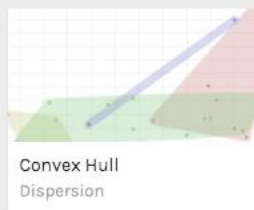


Dendrograms are tree-like diagrams used to represent the distribution of a hierarchical clustering. The different depth levels represented by each node are visualized on the horizontal axes and it is useful to visualize a non-weighted hierarchy.

Based on
<http://bl.ocks.org/mbostock/4063570>



Contour Plot
Dispersion



Convex Hull
Dispersion



Hexagonal Binning
Dispersion



Scatter Plot
Dispersion



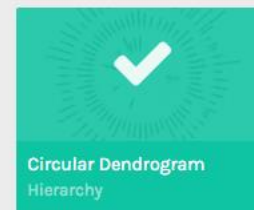
Voronoi Tessellation
Dispersion



Beeswarm Plot
Distribution



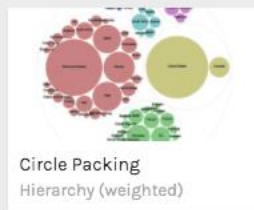
Box plot
Distribution



Circular Dendrogram
Hierarchy



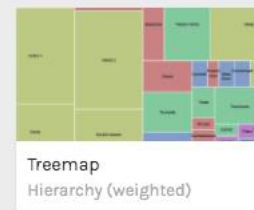
Cluster Dendrogram
Hierarchy



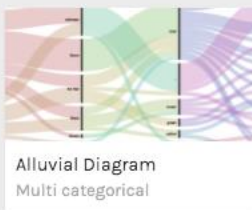
Circle Packing
Hierarchy (weighted)



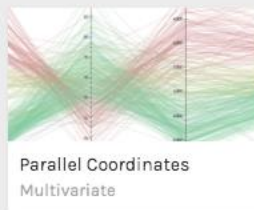
Sunburst
Hierarchy (weighted)



Treemap
Hierarchy (weighted)



Alluvial Diagram
Multi categorical



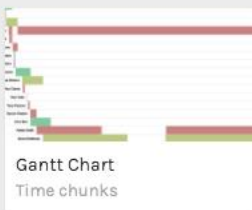
Parallel Coordinates
Multivariate



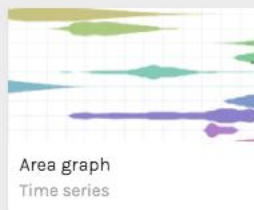
Bar chart
Other



Pie chart
Other



Gantt Chart
Time chunks



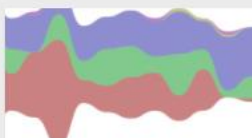
Area graph
Time series



Bump Chart
Time series



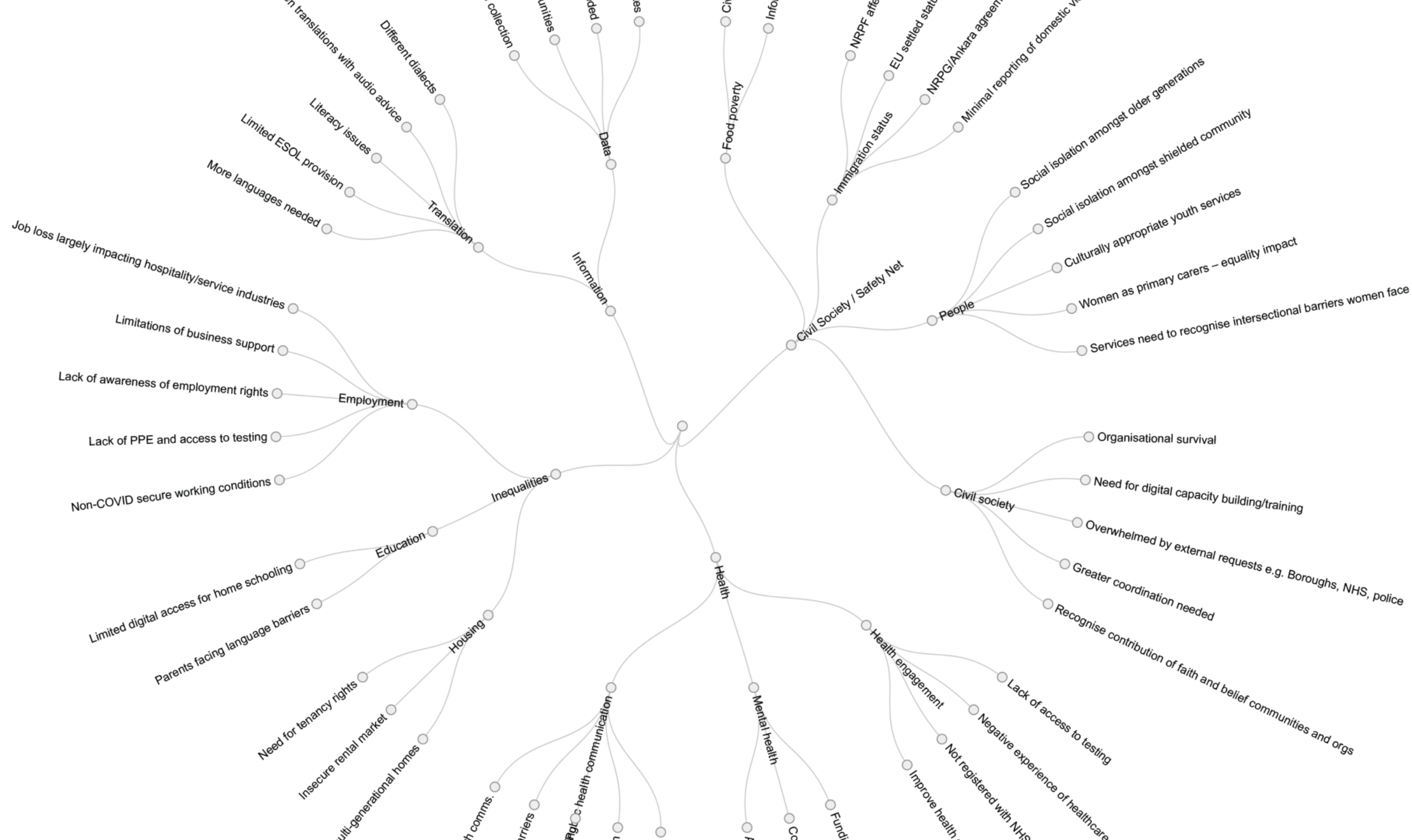
Horizon graph
Time series



Streamgraph
Time series



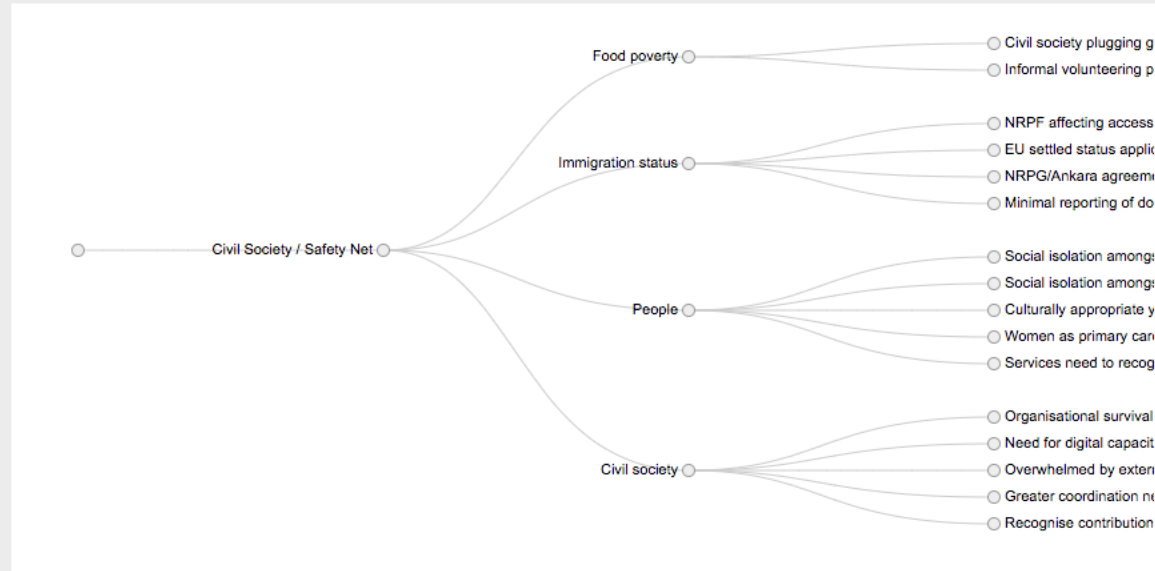
Custom



Customize your Visualization

Width

Height



Download

- Vector graphics (svg)
- Vector graphics (svg)**
- Image (png)
- Data model (json)

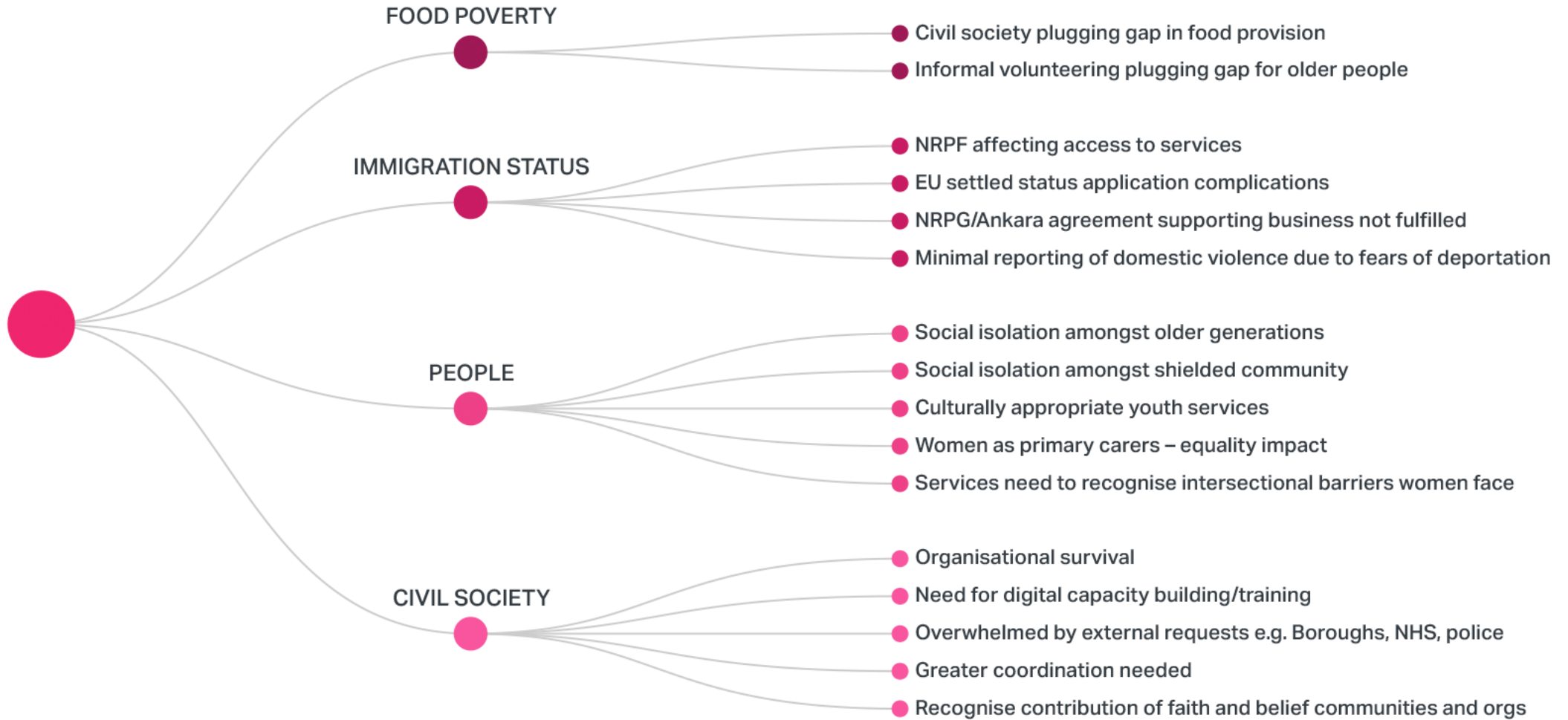
</> Embed SVG Code

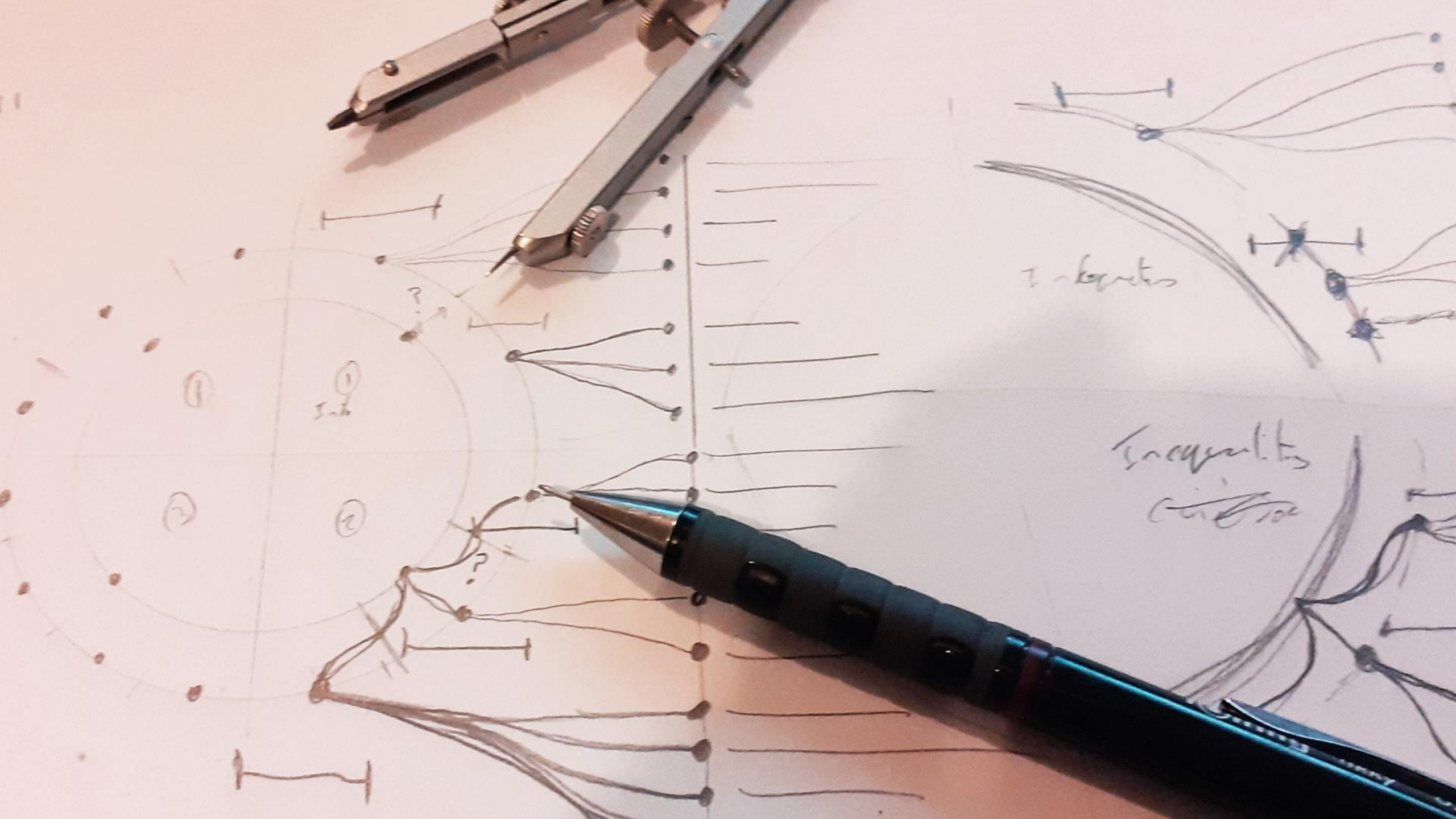
```
<svg width="847" height="400" xmlns="http://www.w3.org/2000/svg"><g transform="translate(40,0)"><path class="link" d="M229.0000000000003,175C100,175 100,175 0,175" style="fill: none; stroke: rgb(204, 204, 204); stroke-width: 1px;"></path><path class="link" d="M458.0000000000006,30C329,30 329,175 229.0000000000003,175" style="fill: none; stroke: rgb(204, 204, 204); stroke-width: 1px;"></path><path class="link" d="M458.0000000000006,110.000000000001C329,110.0000000000001 329,175 229.0000000000003,175" style="fill: none; stroke: rgb(204, 204, 204); stroke-width: 1px;"></path><path class="link" d="M458.0000000000006,220.000000000003C329,220.0000000000003 329,175 229.0000000000003,175" style="fill: none; stroke: rgb(204, 204, 204); stroke-width: 1px;"></path><path class="link" d="M458.0000000000006,340C329,340 329,175 229.0000000000003,175" style="fill: none; stroke: rgb(204, 204, 204); stroke-width: 1px;"></path><path class="link" d="M687,20C558,20 558,30 458.0000000000006,30" style="fill: none; stroke: rgb(204, 204, 204); stroke-width: 1px;"></path><path class="link" d="M687,40C558,40 558,30 458.0000000000006,30" style="fill: none; stroke: rgb(204, 204, 204); stroke-width: 1px;"></path><path class="link" d="M687,80C558,80 558,110.0000000000001 458.0000000000006,110.0000000000001" style="fill: none; stroke: rgb(204, 204, 204); stroke-width: 1px;"></path><path class="link" d="M687,100C558,100 558,110.0000000000001 458.0000000000006,110.0000000000001" style="fill: none; stroke: rgb(204, 204, 204); stroke-width: 1px;"></path><path class="link" d="M687,120C558,120 558,110.0000000000001 458.0000000000006,110.0000000000001" style="fill: none; stroke: rgb(204, 204, 204); stroke-width: 1px;"></path><path class="link" d="M687,140C558,140 558,110.0000000000001 458.0000000000006,110.0000000000001" style="fill: none; stroke: rgb(204, 204, 204); stroke-width: 1px;"></path><path class="link" d="M687,180C558,180 558,220.0000000000003 458.0000000000006,220.0000000000003" style="fill: none; stroke: rgb(204, 204, 204); stroke-width: 1px;"></path><path class="link" d="M687,200C558,200" style="fill: none; stroke: rgb(204, 204, 204); stroke-width: 1px;"></path></g></svg>
```

Copy the snippet above into your HTML code to embed the visualization



CIVIL SOCIETY / SAFETY NET





(1)

(1)
Sub

(2)

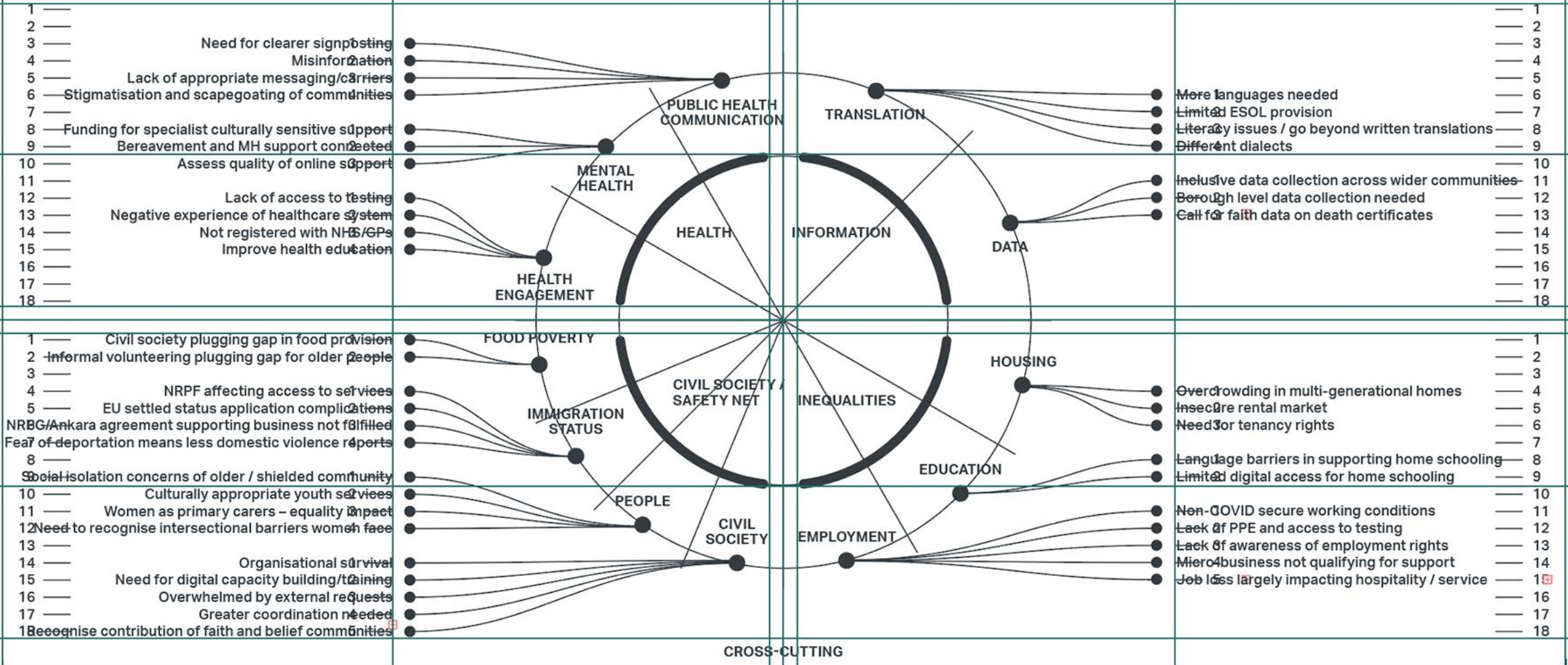
(2)

Inequality

Construction

COMMUNITY ENGAGEMENT ISSUES MAP

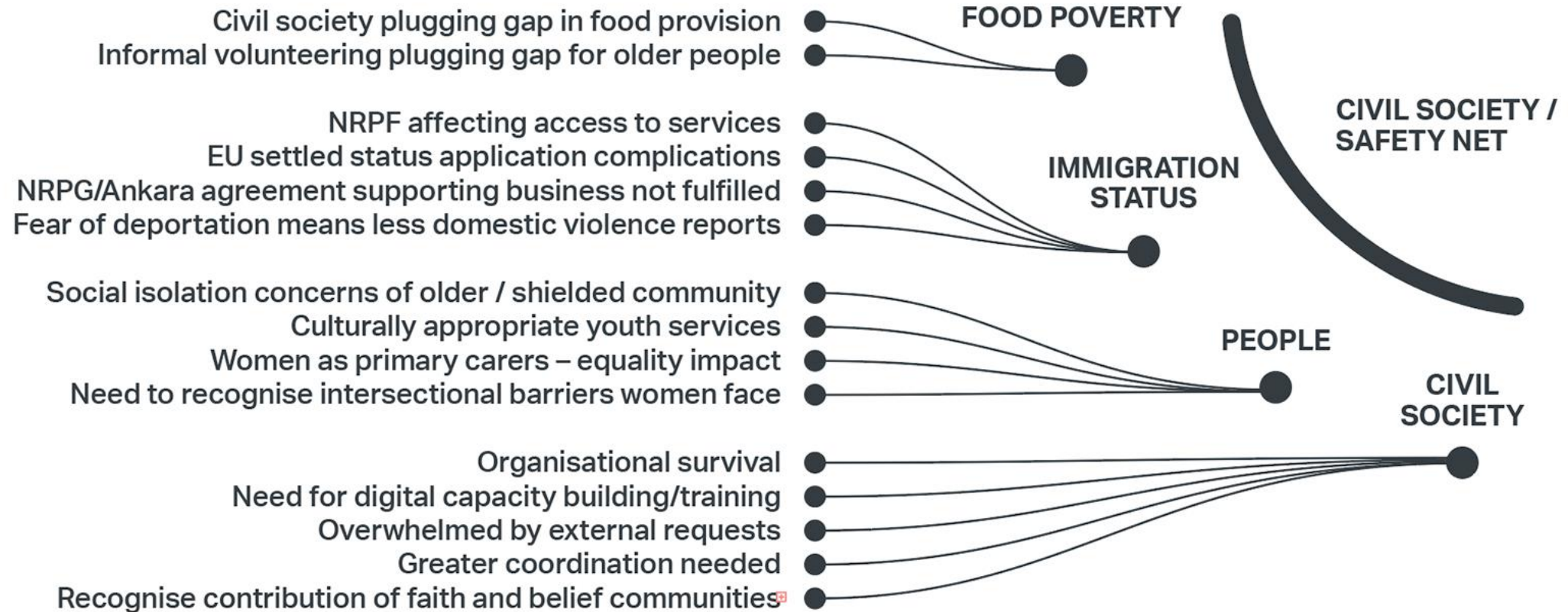
Issues gathered from 18 roundtables with groups disproportionately impacted by COVID-19



CROSS-CUTTING
 Digital Exclusion
 Representation and Discrimination

COMMUNITY ENGAGEMENT ISSUES MAP

Detail View : Civil Society / Safety Net Issues

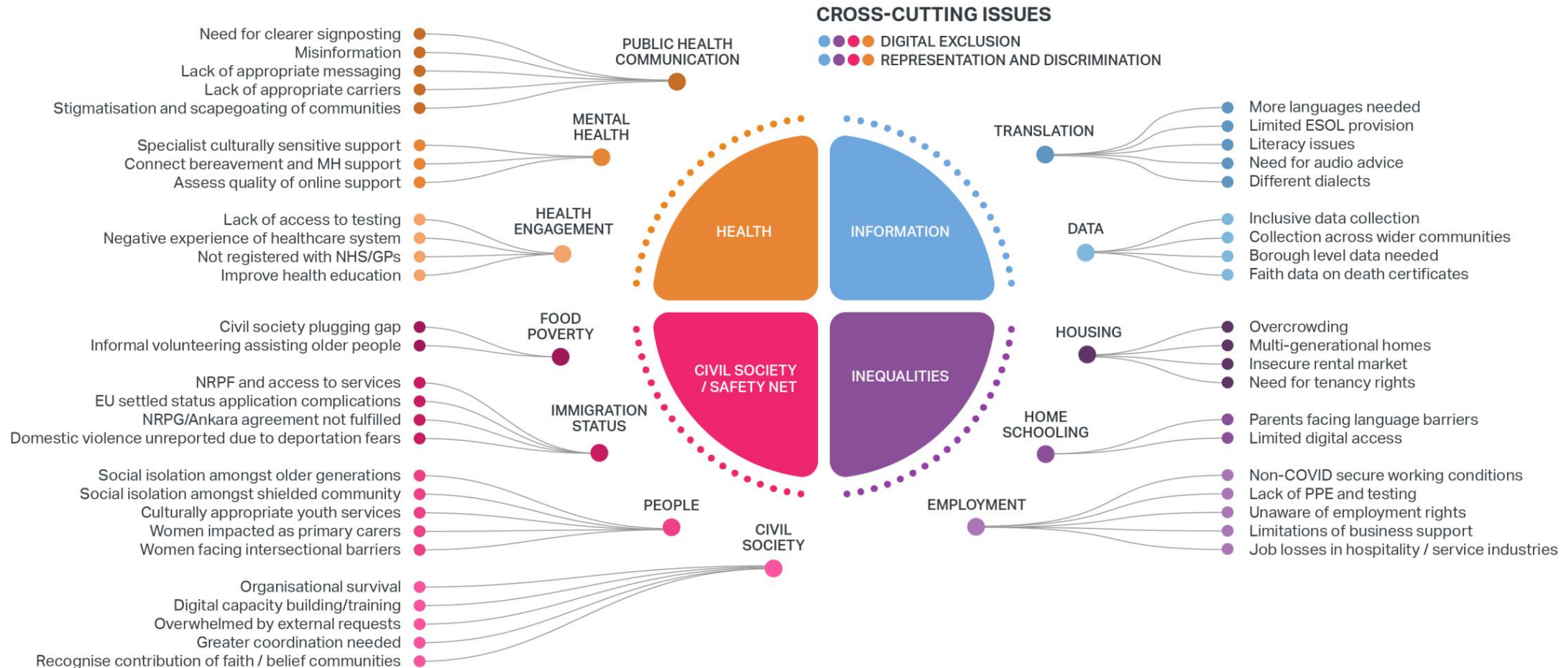


CROSS-CUTTING

Digital Exclusion
Representation and Discrimination

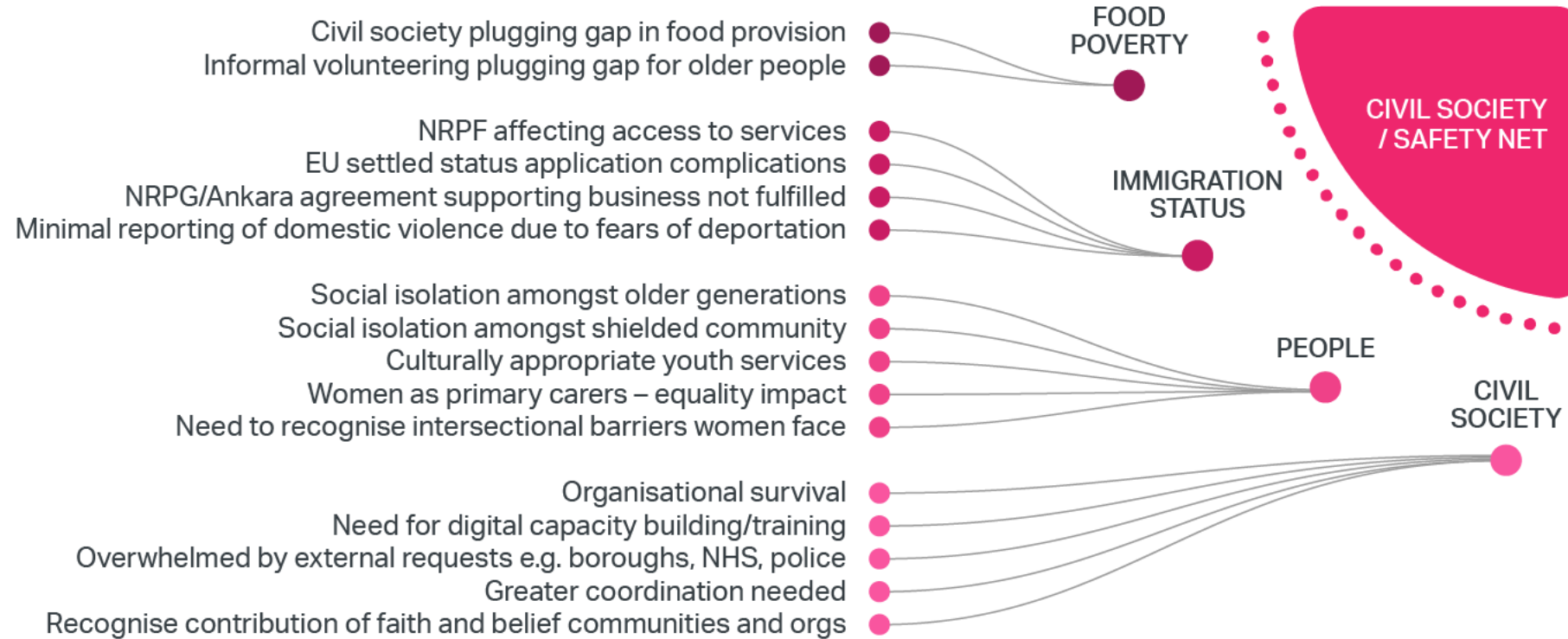
MAP OF COMMUNITY VIEWS: COVID-19

Concerns gathered from 21 roundtables with groups disproportionately impacted by the pandemic



MAP OF COMMUNITY VIEWS: COVID-19

Detail View : Civil Society / Safety Net Issues



CROSS-CUTTING ISSUES

● ● ● ● DIGITAL EXCLUSION

● ● ● ● REPRESENTATION AND DISCRIMINATION

QUESTIONS AND COMMENTS