

# Census 2021

cyfrifiad  
census  
2021

## Equalities Data and Analysis Plans

**Dr Jesse Ransley**

Ethnicity, Identity, Language and Religion (EILR) team

24 May 2021

# What's included

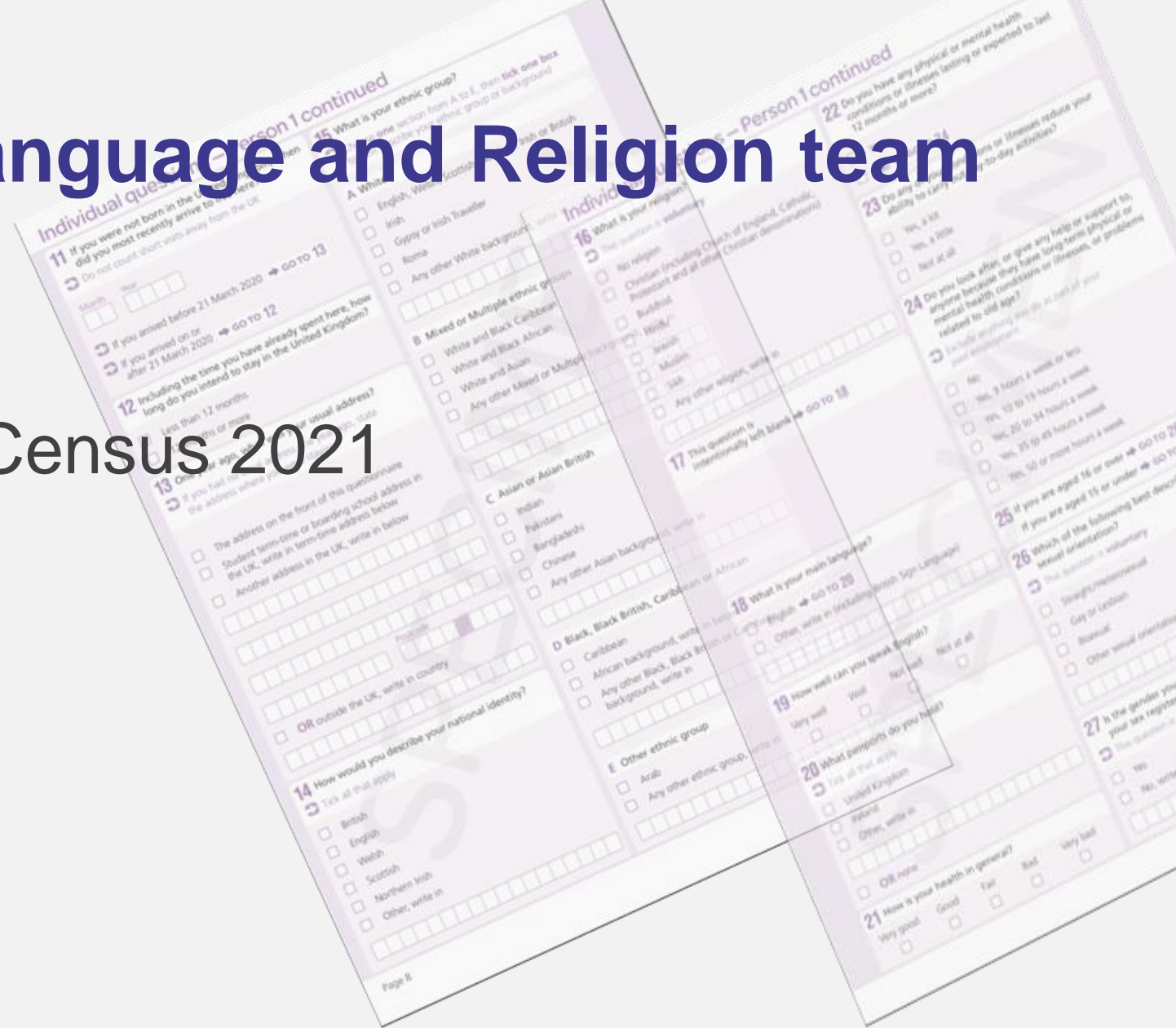
- **Who we are**
- **Why we're here**
- **What we produced from Census 2011**
- **What do you need from Census 2021 analysis?**
- **How to get in touch**

# Who we are

Ethnicity, Identity, Language and Religion team

# Ethnicity, Identity, Language and Religion team

- One of 12 'topic' teams
- Questions 14 to 19 on Census 2021
  - **National Identity**
  - **Ethnicity**
  - **Religion**
  - **Language**



# EILR: 'Culture' questions



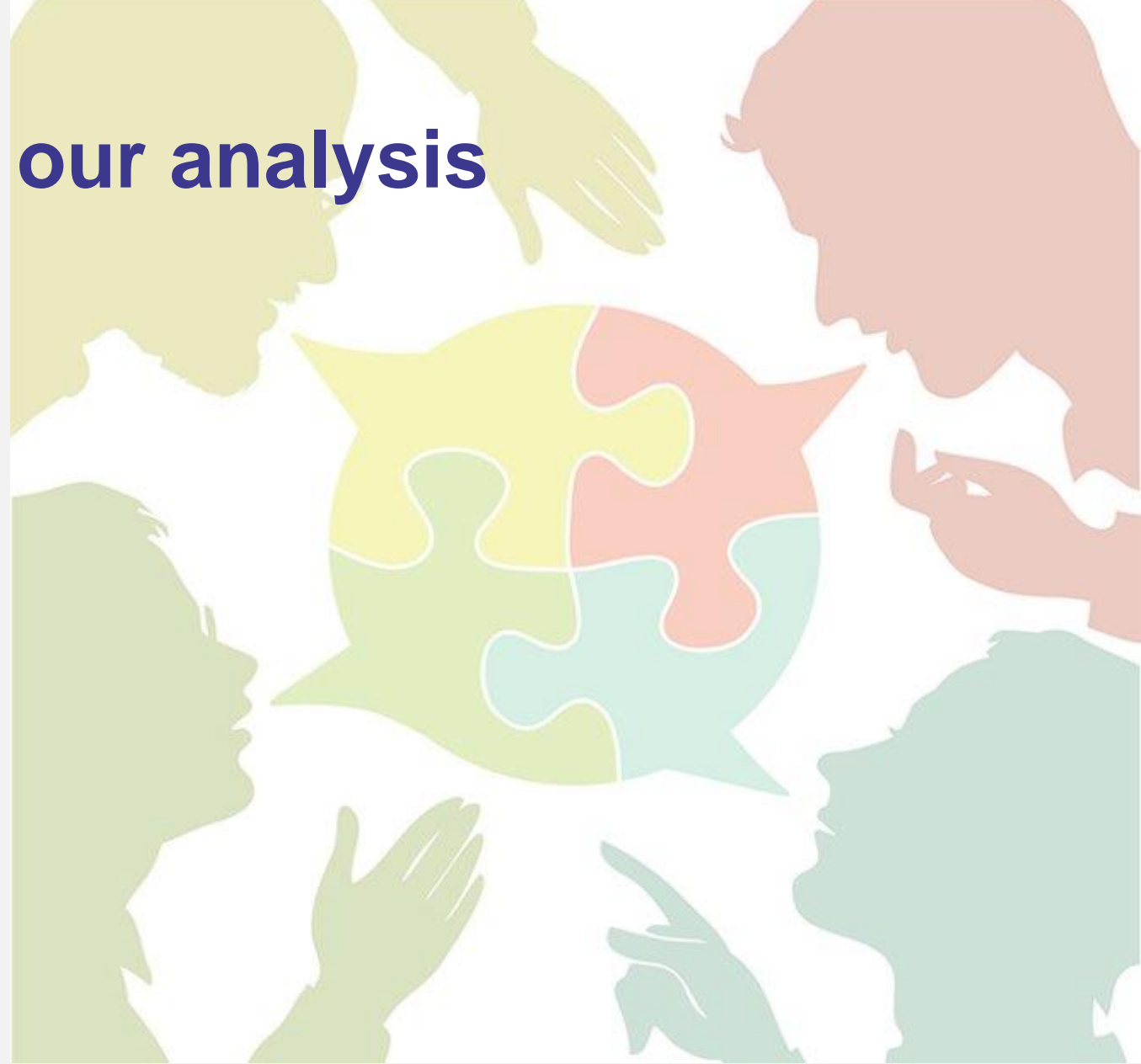
- 'Culture' questions
  - Self-identified, personal
  - Include Protected Characteristics
  - Lived experience
  - Can be sensitive data
- Equalities data
  - but also *analysis*

# Why we're here

Your voice in planning our Census 2021 analysis

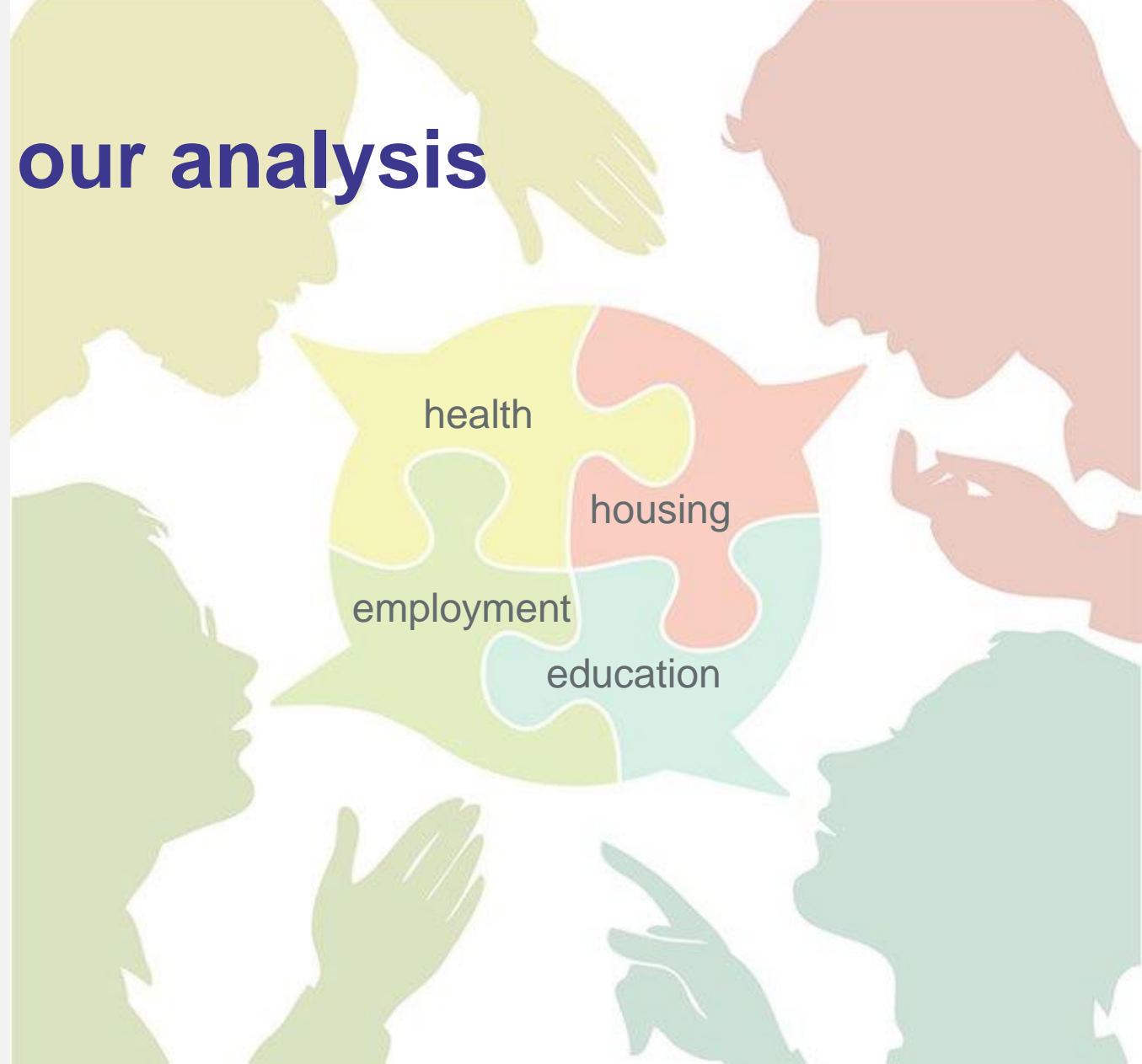
# Your voice in planning our analysis

- The value of our data and analysis is in reflecting user needs
- What's useful for your community or your group?



# Your voice in planning our analysis

- Which themes or topics are important to you?
  - Health outcomes
  - Disability
  - Employment patterns
  - Education outcomes
  - Languages
  - Generational change
  - Carers





# 2011 Census

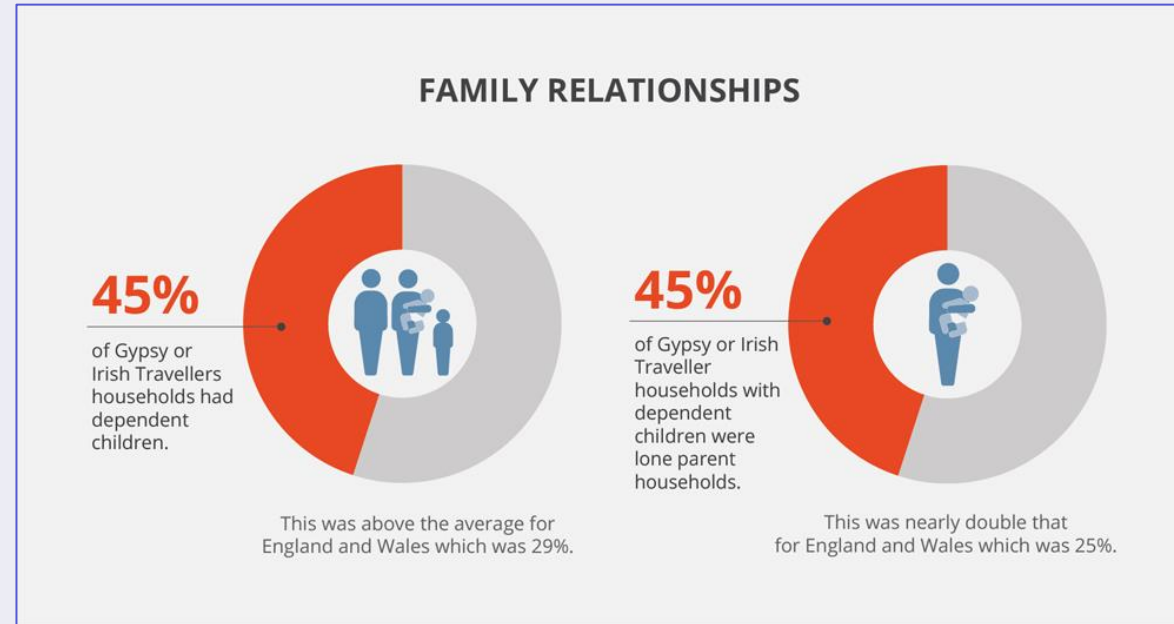
Examples from 2011 Census analysis

# 2011 Census analysis

- [Religion - religious affiliation in England & Wales](#)
- [Ethnicity and national identity in England and Wales 2011](#)
- [Language - language in England & Wales](#)
- [What does the census tell us about religion in 2011?](#)
- [English language proficiency in England and Wales: main language and general health characteristics](#)
- [Gypsy or Irish Travellers smallest ethnic minority at 58,000](#)
- [People who could not speak English well or at all had a lower rate of employment](#)
- [What does the 2011 Census tell us about inter-ethnic relationships?](#)
- [Ethnicity and the labour Market](#)
- [What is your religion?](#)

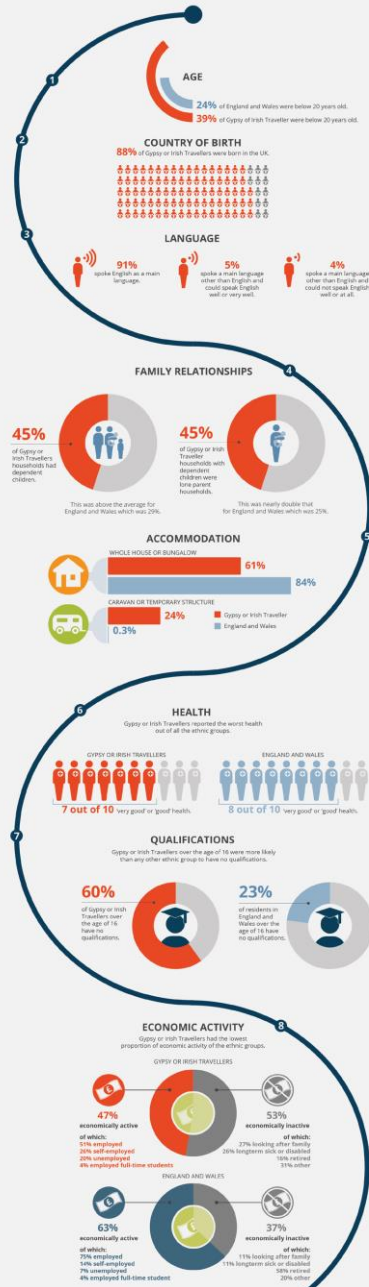
# Gypsy or Irish Travellers population report

- Themes
  - Country of birth
  - Language
  - Family relationships
  - Accommodation
  - Health
  - Qualifications
  - Economic activity
  - Occupation type
- Infographic



58,000 people

This is 1% of the usual resident population of England and Wales, making it the smallest ethnic group (with a tick box) in 2011. Gypsy or Irish Travellers are recognised under the Equality Act 2010 and are widely considered by Government (national and local) and charities to be a vulnerable marginalised group who suffer from poor outcomes. In the 2011 Census, the ethnic group question offered for the first time a dedicated tick box for respondents to identify as 'Gypsy or Irish Traveller' (this does not include people who identify as Roma).



# Census 2021 plans

What do you need from Census 2021 analysis?

# Our plans

- Analysis commitments:
  - Roma
  - Sikh
  - Jewish
  - Somali and other African backgrounds
  - Cornish



# Our proposed plans

- Overviews
- Thematic analysis
  - Mixed and Multiple Ethnicities
  - Multi-ethnic households
  - Black British, Asian British and emerging ethnic group identifications
  - Ethnicity and income
  - Ethnicity and crime
- ‘Populations profiles’

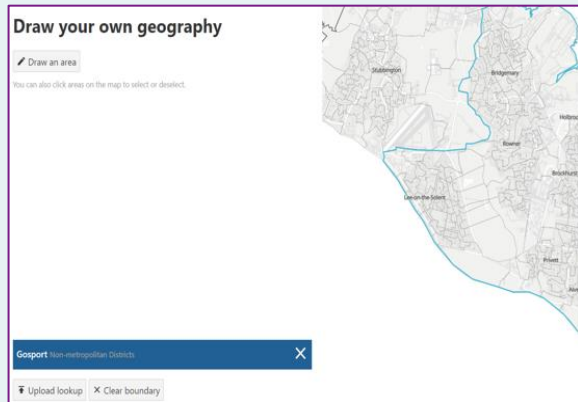
Area of Analysis	Purpose of Research
<b>National Identity in England &amp; Wales</b>	To provide an overview of national identity across England and Wales including further analysis of the 'write-in' data.
<b>Ethnicity in England &amp; Wales</b>	Provide a detailed picture of ethnicity across England and Wales and how it has changed in comparison with the 2011 Census (across the 19-group classification). Where possible, a detailed analysis of the 'write-in' data will ensure outputs will reflect and support smaller ethnic groups and communities, alongside detailed 'breakdowns' and population profiles of the higher-level tick-box categories (such as 'Black Caribbean', 'Chinese', 'Any other Asian Background' and 'Arab').
<b>Religion in England &amp; Wales</b>	Our aim is to provide data on the religious demography across England and Wales and how it has changed in comparison with the 2011 census. Analysis of the 'write-in' data to identify religious minorities and communities (for example, the Jain or Ravidassia populations), alongside detailed population profiles of the Christian, Buddhist, Hindu and Muslim populations.
<b>Overview of changes between 2011 and 2021 for EILR topics</b>	To publish a report which identifies key changes across census data including education, employment, health and income in relation to ethnicity, identity, language and religion. It will provide an overall picture of EILR topics across the UK.
<b>Health, Housing, Work and Education: Cornish population</b>	Provide analysis on those who identify as Cornish, in relation to health, housing, employment and education, and comparing data to those who do not.
<b>Black African Populations</b>	Analysis of the Somali population in England and Wales, along with analysis of other African ethnic groups becoming newly visible through the new write-in response box. Providing analysis of these communities in relation to health, language, education, employment and generational change.
<b>Gypsy, Roma and Traveller populations</b>	Population profiles of the Gypsy, Roma and Traveller populations in England and Wales, providing analysis on these communities in relation to health, housing, employment and education.
<b>Sikh Population</b>	To provide a population profile to ensure the Sikh population is accurately represented across the UK, and to meet the commitments we have made: including analysis of those who

# What we want to know

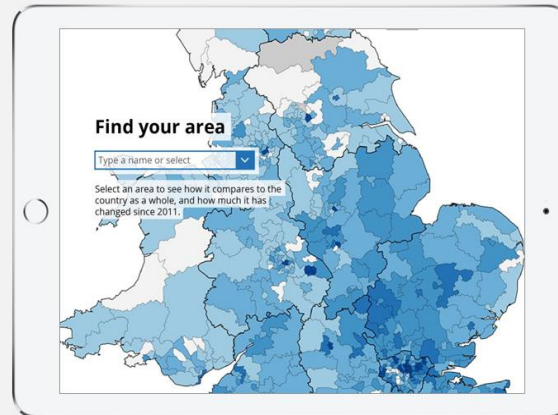
1. Themes and topics
2. New data / Old data
  - ‘African background’ write-in box
  - Roma tick-box
3. Priorities: What is most important?
4. Format needs

# Data visualisation prototypes

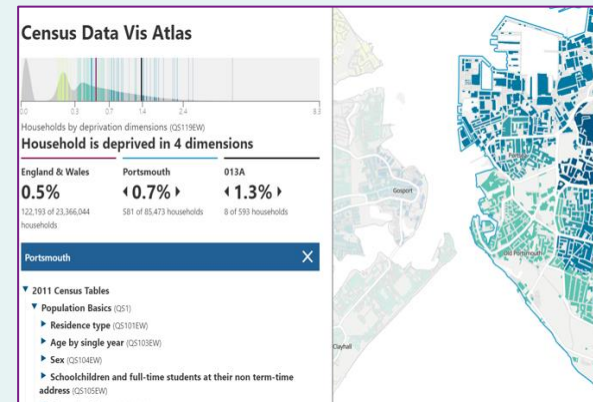
Here are a few examples of prototypes we are developing to help users access, visualise and interpret Census data.



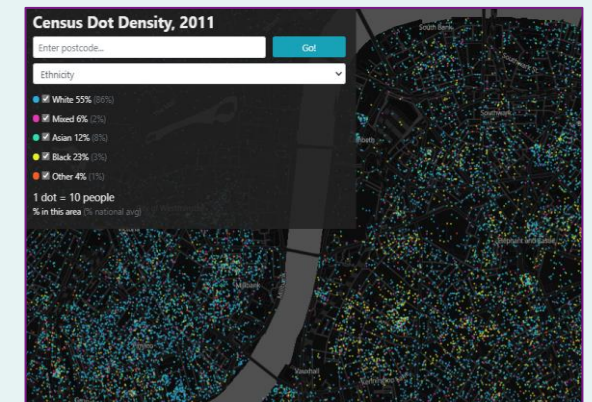
User Defined Areas



Scrolly Telling



Census Data Vis Atlas



Dot Density Map



# How to get in touch

[EILR@ons.gov.uk](mailto:EILR@ons.gov.uk)

# How to get in touch

- Online Consultation
- Contact us directly:  
[EILR@ons.gov.uk](mailto:EILR@ons.gov.uk)

