

# 1. Local infrastructure use case and step-by-step guide

## The use case – a state of the sector report to inform support offered to local organisations

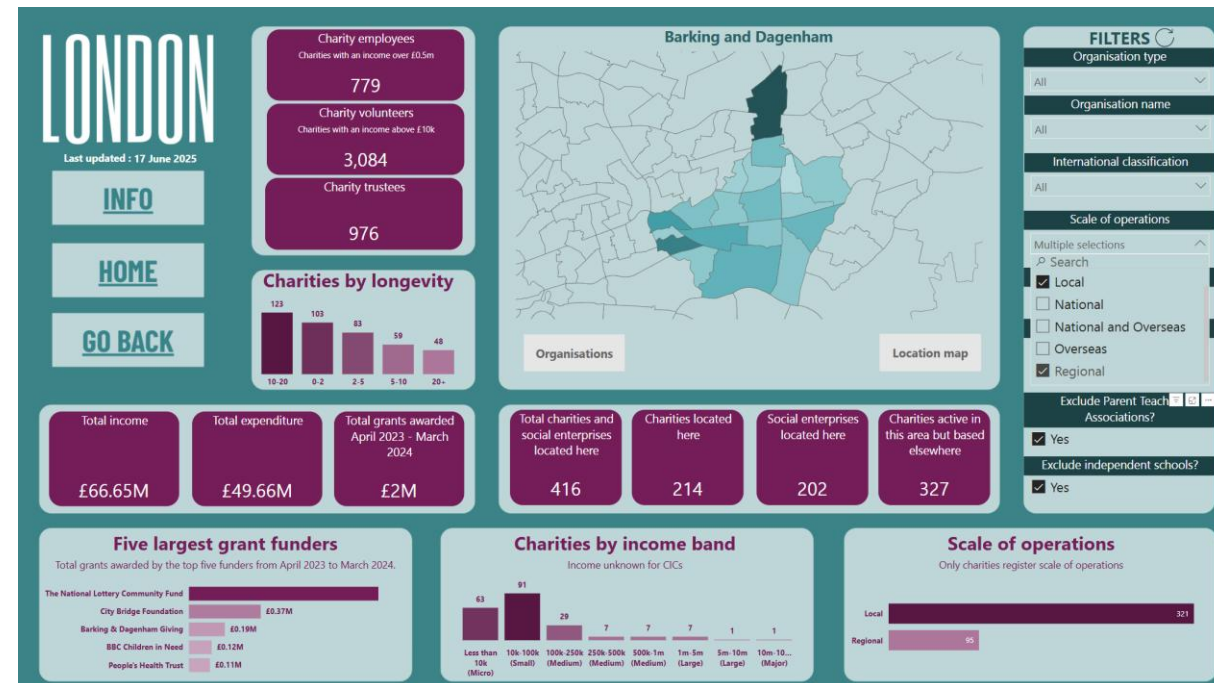
A Local Infrastructure organisation wants to produce a state of the sector report showing how many VCSE organisations are based in their borough including:

- ✓ Numbers of staff, volunteers & employees
- ✓ Income & expenditure
- ✓ Grant funding
- ✓ Organisations delivering services in, but not based in, the borough

They want to exclude charities working nationally or overseas as well as Independent schools & Parent Teacher Associations (PTAs) as consider not really contributing to local VCSE service provision.

## Steps to follow

1. On the home page select **Boroughs**
2. On the map, click on a borough to select it
3. Click on the **Drill through** button
4. In the exclusion filters, tick exclude **Parent Teacher Associations** & exclude **Independent schools**
5. Under the Scale of Operation filter, select **Local** (operating in one or two boroughs) and **Regional** (operating in multiple boroughs or across London)



## 2. Local government use case and step-by-step guide

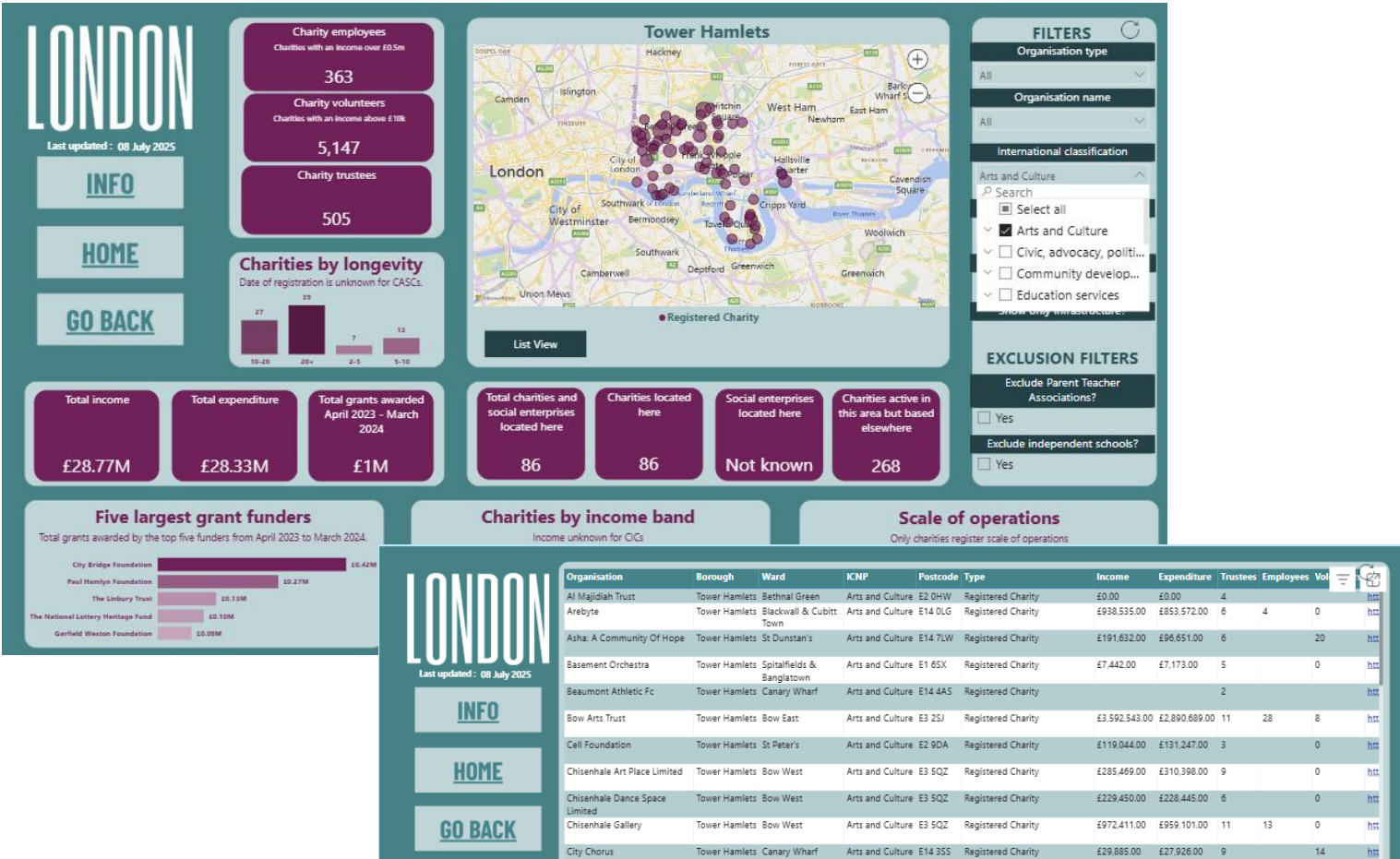
### The use case – identify VCSE organisations whose services could complement statutory provision

A Local Council team providing services in the borough wants to place on a map all Arts & Culture organisations locally so they can collaborate and signpost people to relevant activities. Although they already have a good idea of who is operating in their own borough, they are keen to find additional organisations in surrounding boroughs too.

The International Classification Not for Profit (ICNP) can be used for this. Charities select one of them when registering with the charity commission.

### Steps to follow

1. On the home page select **a borough**
2. On the map, click on a borough to select it
3. Click on the **Location map** button
4. In the filters, under **International Classification**, select **Arts & Culture**
5. In the filters, under **Scale of Operations**, select **Local & Regional** to exclude organisations working nationally or overseas.
6. Click on the **List View** button to see a list of the organisations



# 3. Frontline organisation use case and step-by-step guide

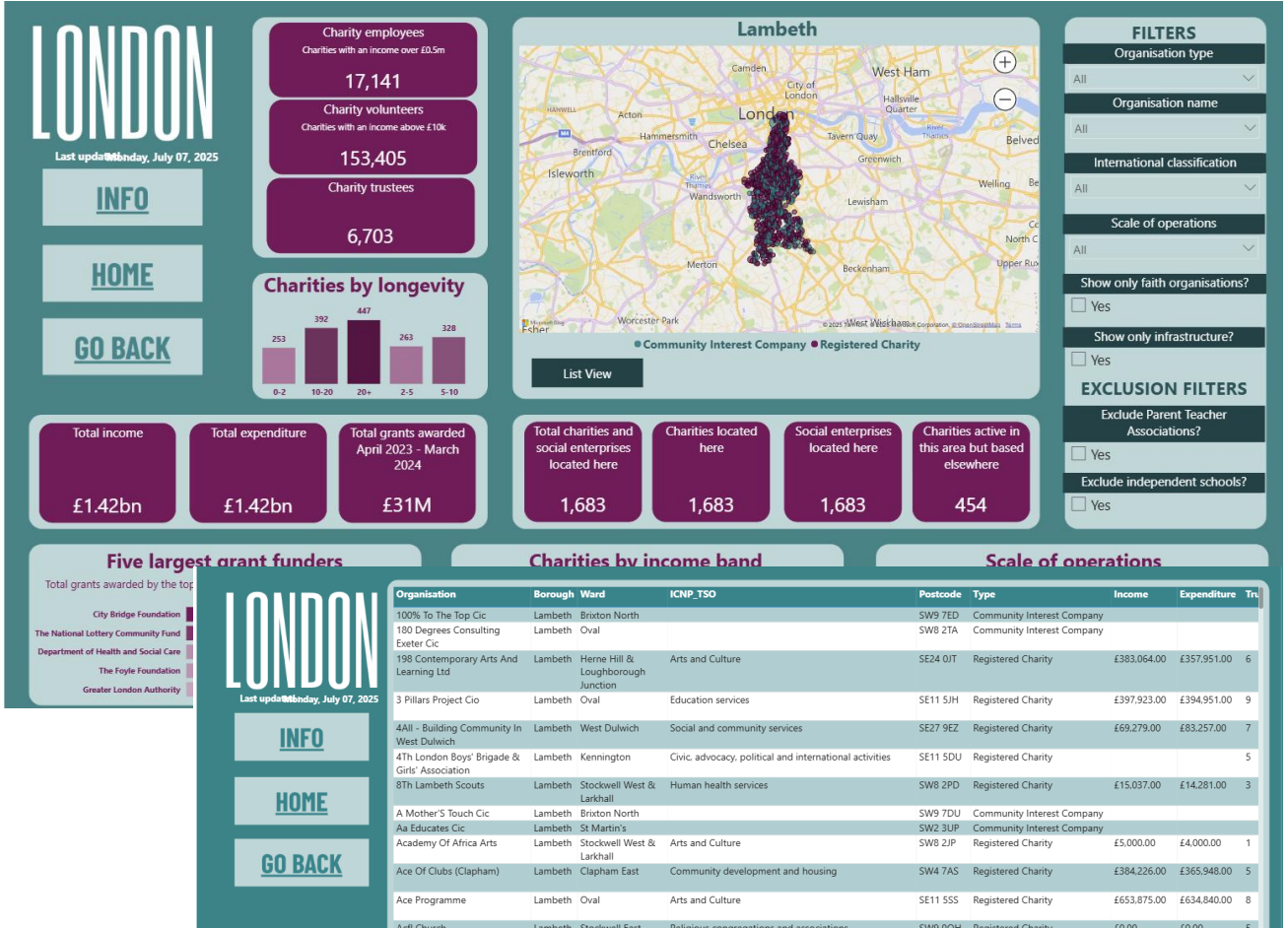
## The use case – find local faith organisations to identify a potential referral network

A new Foodbank and Surplus hub wants to get the word out about their services and have identified that faith organisations are closely connected with a broad range of communities you'd like to reach. They want to produce a list so that they can contact them.

The Faith filter can be used for this (find an explanation of how we identified faith groups in the Info section).

### Steps to follow

- On the home page select **Boroughs**
- On the map, click on a borough to select it
- In the filters, select **Show only faith organisations**
- Click on the **Location** button to go to a map view
- Click on **List view** to see a list of the organisations





# 4. Funder use case and step-by-step guide

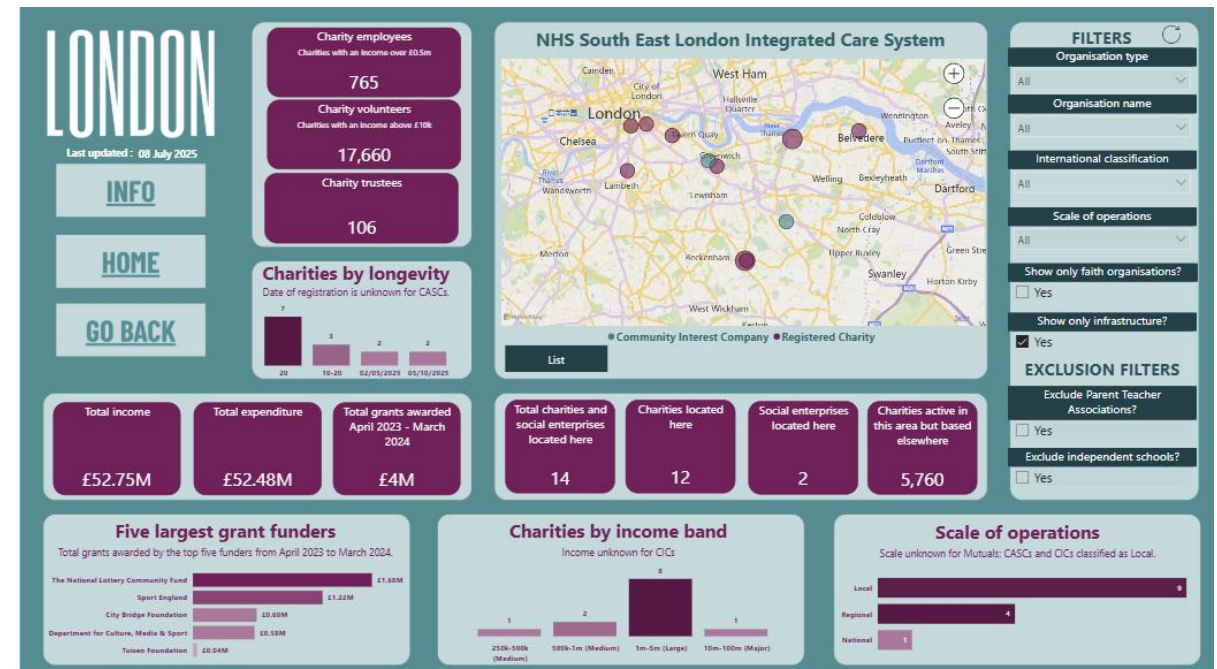
## The use case – understanding existing local provision and ensuring we're not missing funding anyone

A funder wants to fund a specialist infrastructure organisation in a specific London borough. Before going ahead, they want to ensure that where there may be existing organisations offering similar services, including generic infrastructure support either in the same borough or a neighbouring one, duplication is minimised but collaboration to add value is encouraged.

Selecting a ICS region enables you to see the bigger picture around a London borough. The 'Show infrastructure only' filter can be used to identify organisations providing infrastructure support to the sector.

### Steps to follow

1. On the home page select an **ICS**
2. On the map, click on an ICS to select it
3. Click on the **Location map** button to view organisations operating in the ICS area on a map
4. Select the filter **Show infrastructure organisations only** to narrow down results.



# 5. NHS use case & step by step guide

## The use case – understanding existing local provision of the VCSE sector in an Integrated Care System (ICS)

A NHS VCSE ICS Alliance wants to better understand the VCSE sector in their ICS to better understand complementary service provision for social prescribing and referrals.

### Steps to follow

1. On the home page select **ICS**
2. On the map, click on a ICS to select it
3. Click on the **Drill down** button to see the ICS in more detail
4. To view a borough in more detail, select it and click one of the buttons

