



Hidden London

DATA ABOUT THE SECTOR

DISCOVER. LEARN. ANALYSE. SHAPE. REPEAT

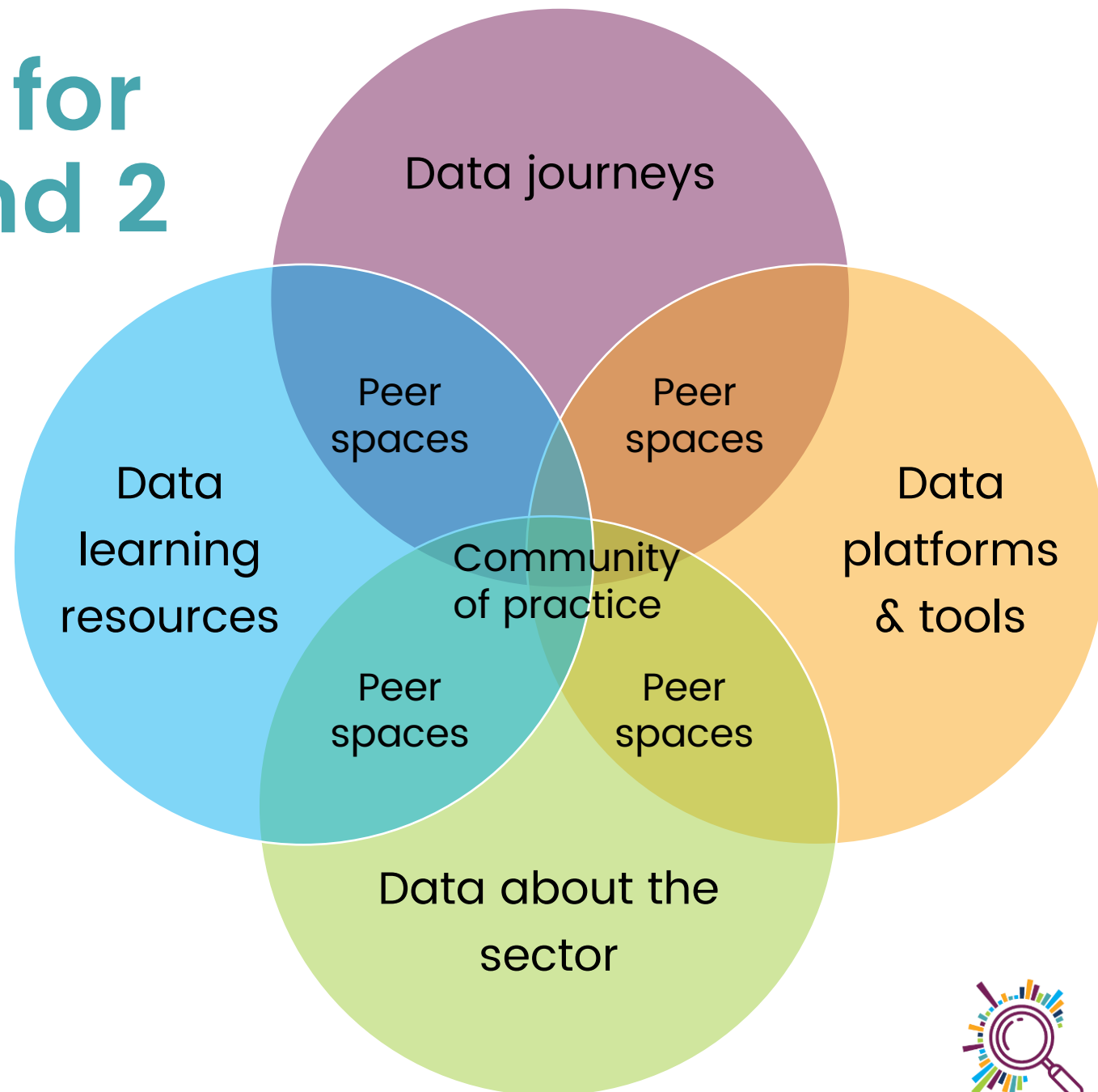
What we'll be covering today

- ✓ Sharing what we've been doing working with London CVSSs
- ✓ Finding out what else this links to
- ✓ Collective next steps



Goals & activities for Cornerstone Round 2

1. Data journeys
2. Data platforms and tools
3. Data learning resources
4. Data about the sector
5. Peer to peer data spaces



The problem

- ✓ Data about the sector in London isn't accessible in one place
- ✓ There's a multitude of siloed directories & databases
- ✓ A lack of data standards & external publication means it's difficult to collate data at a regional level
- ✓ There is huge duplication of effort, and sector organisations are being required to add their data in multiple locations
- ✓ Open data sets have limitations – they're complex and it's harder to discover 'below the radar organisations'



What does good look like?

- ✓ Agreed minimum data standards
- ✓ Linking of local data sets to regional level
- ✓ We better understand the scope, scale and make up of civil society in London



Our learning questions

- ✓ Can we identify existing data collection opportunities to start to standardise e.g. State of the Sector reports?
- ✓ Can we bring infrastructure orgs, local government, health agencies and funders to work together?
- ✓ Can the sector lead this work, dictating how sector data is categorised and used?



Co-design activity

- ✓ Workshops for infrastructure organisations in 2021
- ✓ Who needs data about the sector?
- ✓ What are the use cases?

As a Director I need to assess the size, shape and distribution of the sector to make business cases for impact and investment

As someone supporting groups I need to know who else is doing what so I can encourage collaboration and avoid duplication

As a GP I need to know which organisations operate very locally to support my patients

- ✓ What small step could we take together to improve things?

State of the Sector reports



Work in Kingston, Southwark and
Tower Hamlets



Progressing with...

1. Working with London Plus & the CVS Network to explore standardising State of the Sector surveys
2. Mapping other directories of VCSE organisations held by other infrastructure / networks
3. Exploring whether we can support use of open data about the charity sector



State of the Sector Survey

11. Please indicate below if you accessed data from any of the following Open Data sets in addition to surveys sent to the local sector?

[More Details](#)

● Charity Commission data (data ...	0
● Companies House data (data a...	1
● 360 Giving data (grants data fro...	1
● Other	4



Using Charity Commission data

Kingston's Voluntary and Community Sector
- the heartbeat of our community

The local picture

Current challenges

How you can help

Covid-19
- an extraordinary challenge and community response

A drive to make a difference



Tower Hamlets
Council for Voluntary Service (THCVS)

**STATE OF THE SECTOR
REPORT 2023**

www.thcvs.org.uk
Registered Charity No. 1137143



Links to other work...

Data Collective:
Place based
spoke

VCSE
Observatory

London Funders

London Plus:
Impact of
Infrastructure

VCSE Alliances
& ICS

Civic Strength
Index



What else?

Let's share...



Our experiments



Charity Commission data
explorations



Can we create a step by step guide so people can filter charity commission data for their own areas?



Borough profiles using charity data

A guide for creating local area profiles using charity commission & other data sources

In this stage of our journey looking at how we can support CVSs in London access data about the sector in their borough, we have been testing whether it's possible to put together a guide documenting the process we have taken in recent data dives with Kingston Voluntary Action and Tower Hamlets CVS.

Both CVSs were undertaking State of the Sector reports and we enlisted [David Kane's](#) help to access and explore Charity Commission data to provide local charity context alongside responses to a survey sent by the CVSs and completed by a sample of the local VCSE sector (including community groups and social enterprises in addition to registered charities).

[See blog and guide here](#)



Guide needed to include

- ✓ Steps to first download the Charity Commission data
- ✓ Technical steps needed to manipulate the data in Excel – complete with screenshots
- ✓ Information about the Charity Commission Tables and Fields

An important part of understanding this table (which also applies to some of the other tables in the list) is to know the difference between the “registered_charity_number”, “linked_charity_number” and “organisation_number” fields.



Conclusions

- ✓ It's probably too complex for the intended audience!
- ✓ Multiple data tables
- ✓ Need to use PowerQuery in Excel
- ✓ Need to Look up postcode against external geo data
- ✓ Processing power required – big data sets
- ✓ Needs good understanding of Charity Commission data – including detailed nuances & caveats of specific data fields...

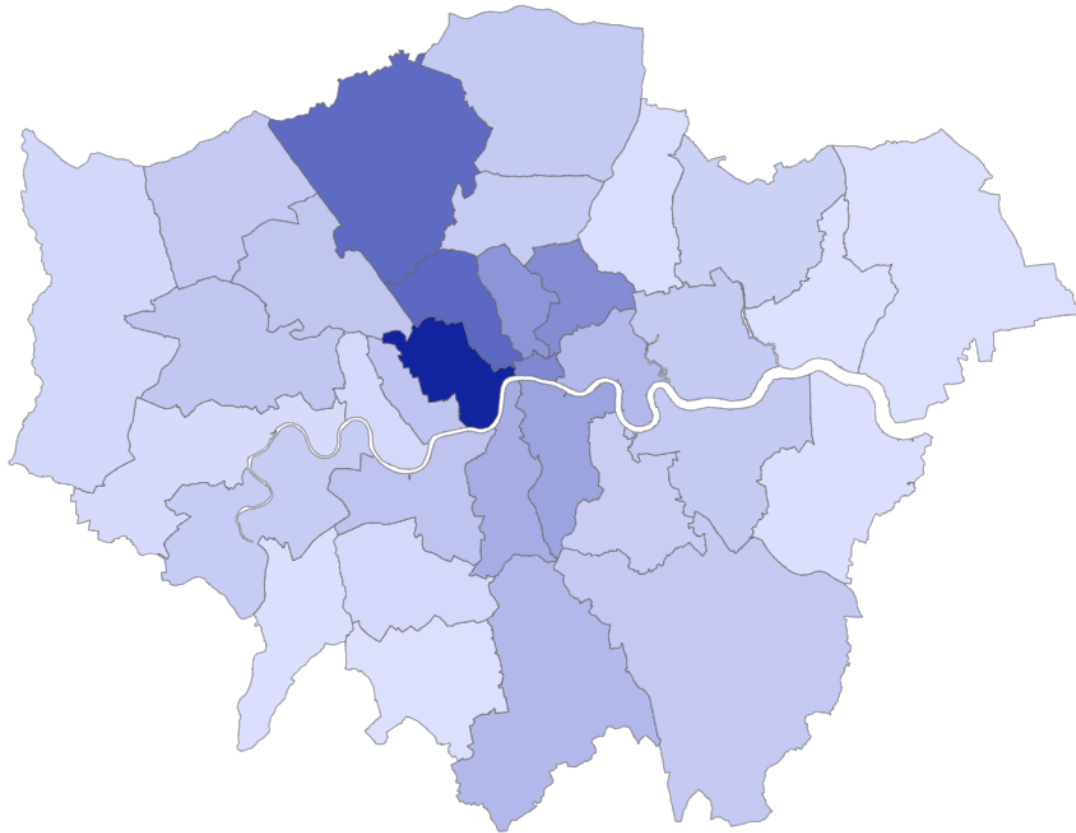


Can we create a useable/
accessible interface with
charity commission data
that anyone can filter for
their place?



Proof of concept – prototype 1

29015 Charities with registered offices in London



Charity name
(HASTE) HELP AFRICAN SCHOOLS TO EDUCATE
(THE CONGREGATION OF) THE OBLATES OF THE ASSUMPTION MISSIONARY NUNS
(TRUST PROPERTY HELD IN CONNEXION WITH) ADATH YISROEL SYNAGOGUE
10 % For The Ocean
10,000 BLACK INTERNS FOUNDATION
100 BLACK MEN OF LONDON
100% Holy Spirit
1001FONTAINES UK
10TH EDMONTON SCOUT GROUP
10TH ENFIELD BOYS' BRIGADE AND GIRLS' ASSOCIATION
10TH LEYTON BOY SCOUT GROUP
10TH ROYAL ELTHAM SCOUT GROUP
10th Teddington Scout Group
10X10 PHILANTHROPY UK LIMITED
110EVENTS
11TH FINCHLEY SCOUT GROUP
11TH ILFORD NORTH SCOUT GROUP
11TH MITCHAM S S PETER AND PAUL SCOUT GROUP
11TH NEWHAM WEST SCOUT GROUP
11TH SOUTHGATE CHRISTCHURCH COCKFOSTERS SCOUT GROUP
11TH WALLINGTON (ST ELPHEGE RC) SCOUT GROUP
125 GROUP LIMITED
12TH CATERHAM SCOUT GROUP (PARSONS PIGHTLE)
12TH ENFIELD SCOUT GROUP
12TH FOREST HILL (SAINT WILLIAM OF YORK) SCOUT GROUP
12TH RUISLIP SCOUT GROUP
13 RIVERS TRUST

Charities - London HQ

* Caveats – just the Charities data table, with postcode look up for borough based in



Next steps

- ✓ Creating a data dictionary (building on Charity Commission's own)
- ✓ Adding & linking other Charity Commission Tables and Fields
- ✓ Adding Filters – so users can exclude charities not relevant to the scenario e.g. schools, PTAs etc
- ✓ Exploring using Find that Charity download / API



Find that Charity

[About](#) | [Login](#)

Find non profit organisations working in the UK

All organisation types

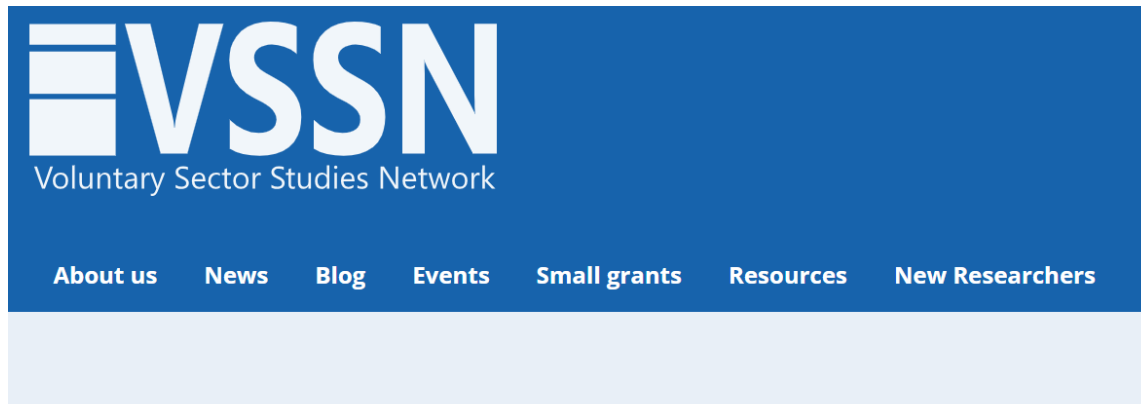


Search

<https://findthatcharity.uk/>



Related work – tools / platforms

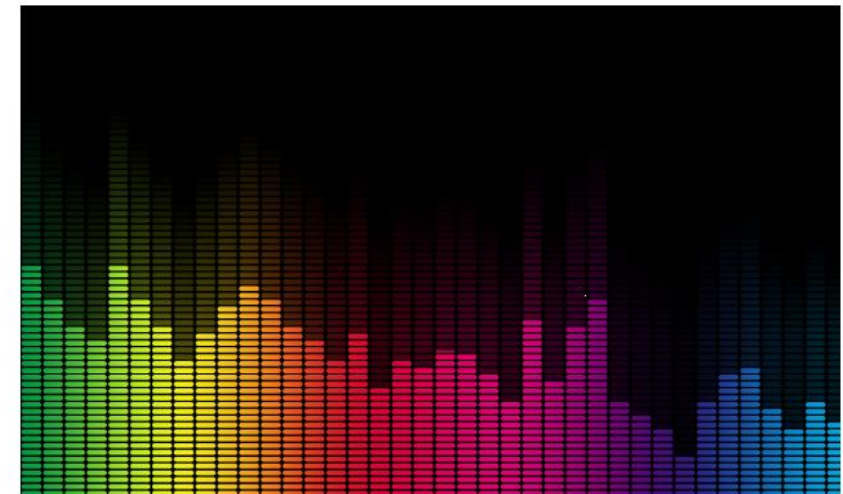


VS data resources [Charity sector data repository](#)

A curated list of data and publications about the UK charity sector and the environment within which it works.

[View data](#)

[Charity Explorer](#)



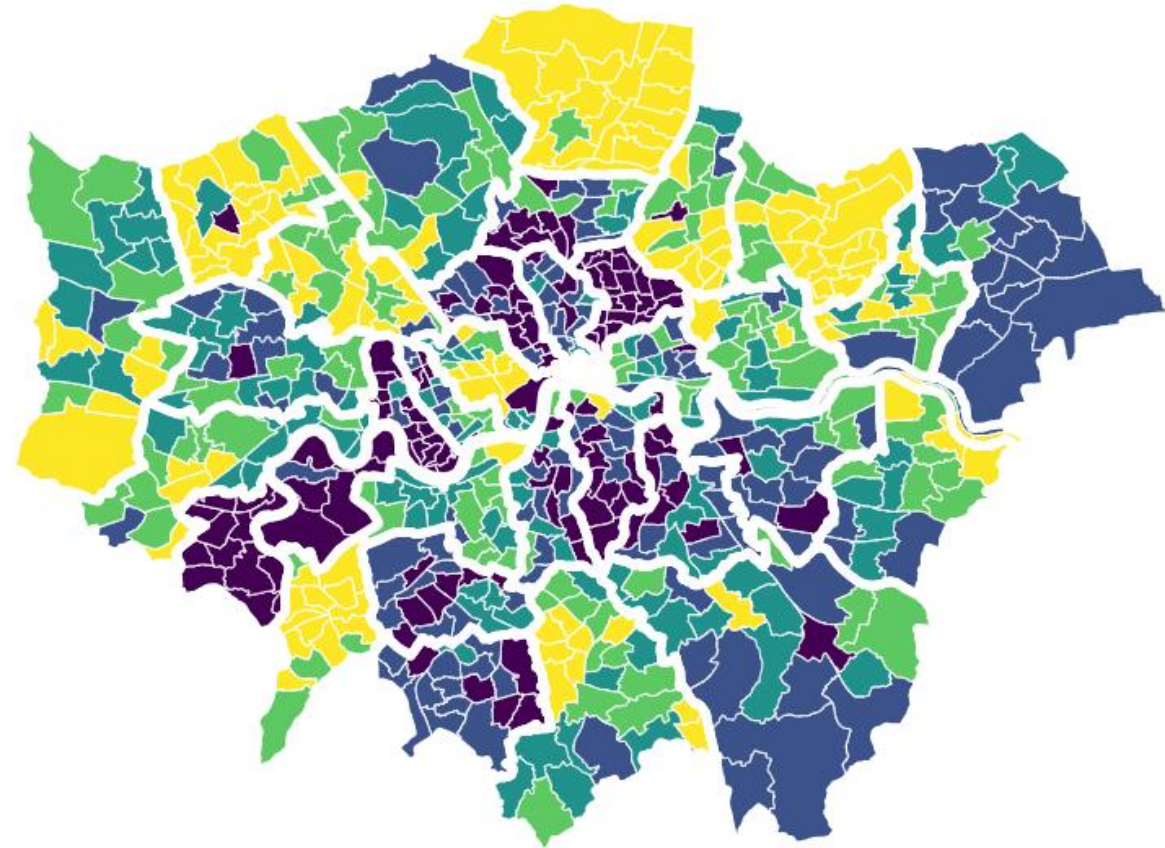
What other tools /
platforms / data
sources does this
link with?

Let's share...



Civic Strength Index Innovation Challenge

- ✓ Current work consulting local authorities, local infrastructure and funders
- ✓ What activities contribute to local social support?
- ✓ Insights will shape criteria for inclusion/exclusion of charity data feeding into the index
- ✓ Contact us to book a 45 min interview
- ✓ Join a workshop on 13 Dec 9.30 – 11 (CVSSs only) – [book your place here](#)



Who's interested in working with us on this?

Setting up a community of practice in London?





Thank you for taking part

www.datawise.london

info@superhighways.org.uk

